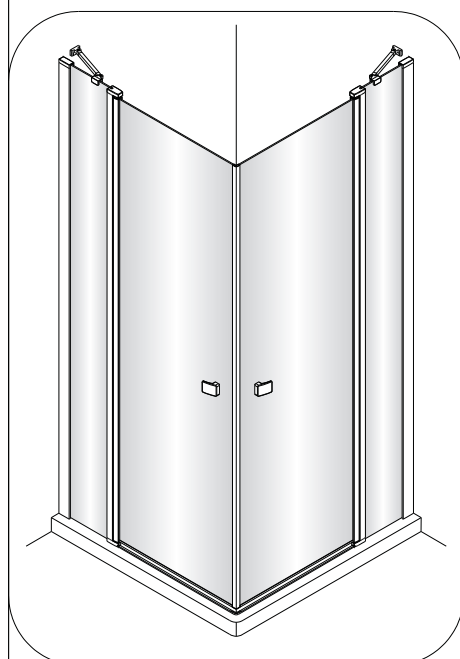


INSTRUKCJA

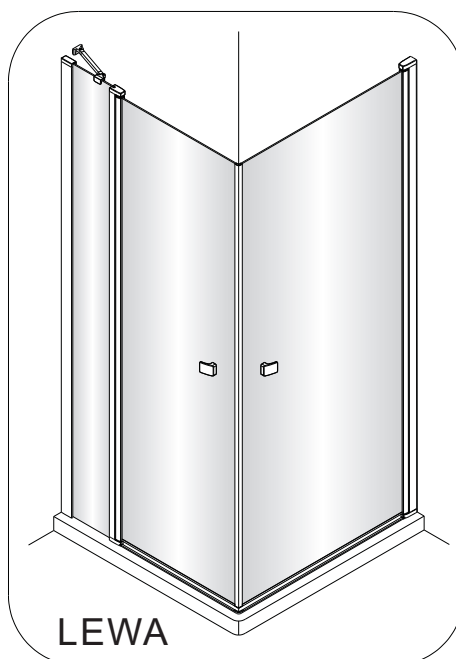
**AM4608012M/AM4609012M
/AM4610012M**

**ZESTAW A (Strona 3-7)
A+A**



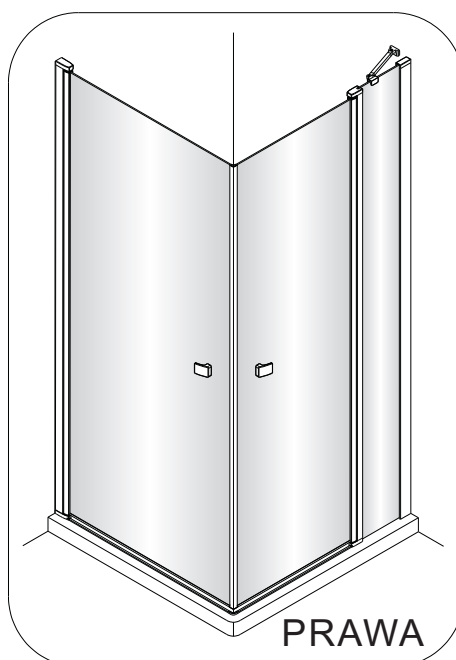
**AM4608012M/AM4609012M
/AM4610012M
+AM4708012M/AM4709012M
/AM4710012M**

ZESTAW B (Strona 8-12) A+B



LEWA

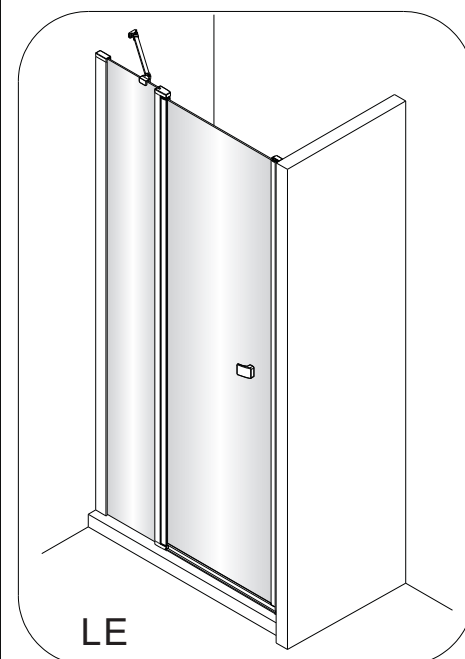
+ AM48195020



PRAWA

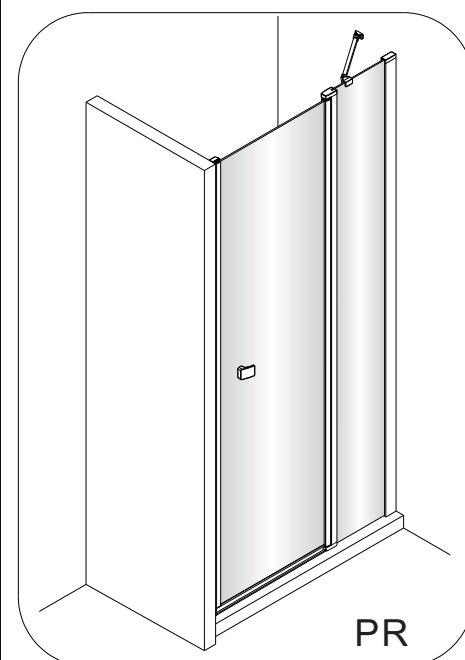
**AM4608012M/AM4609012M
/AM4610012M**

**ZESTAW C (Strona 13-16) A+C
+ AM48195020**

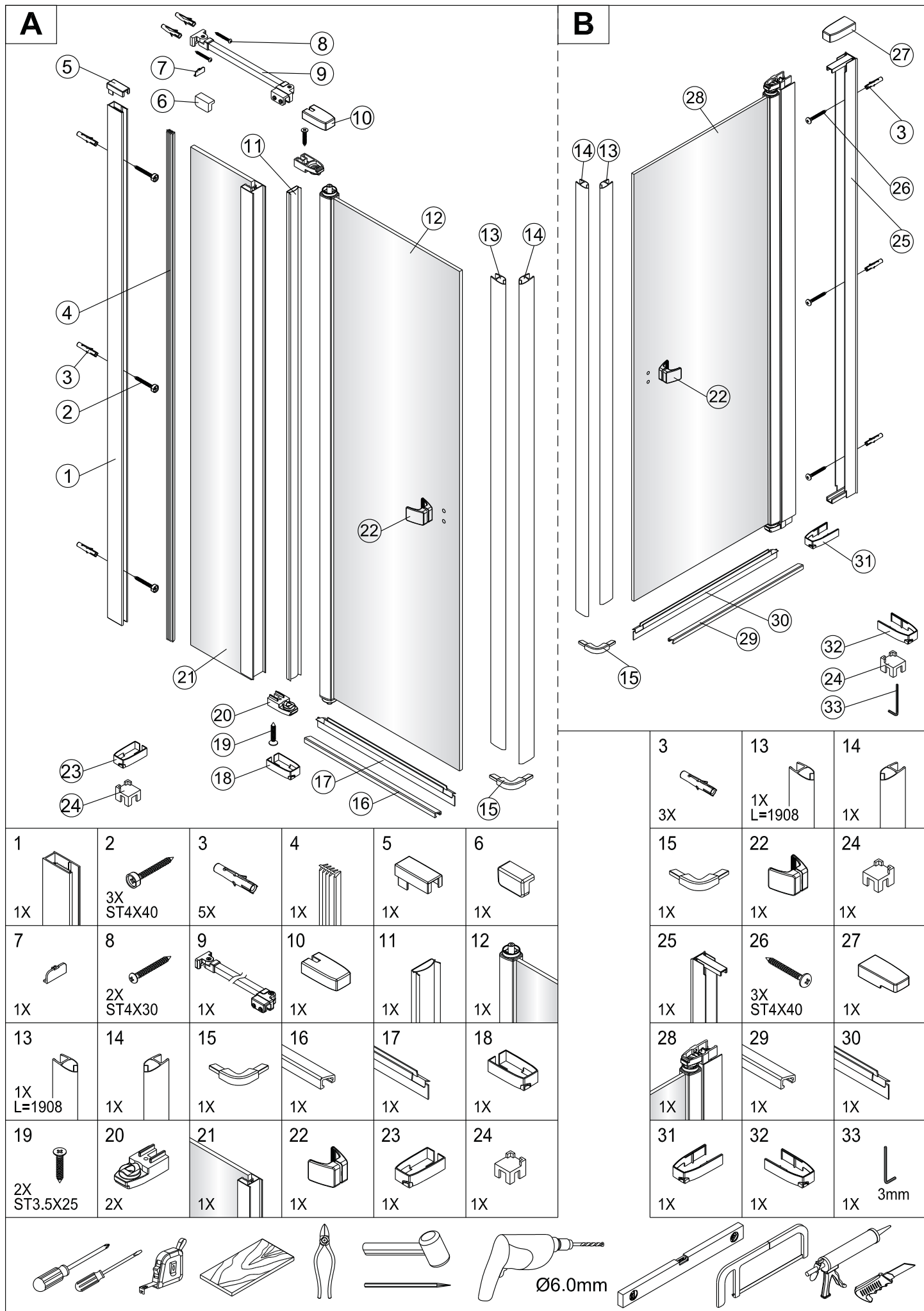


LE

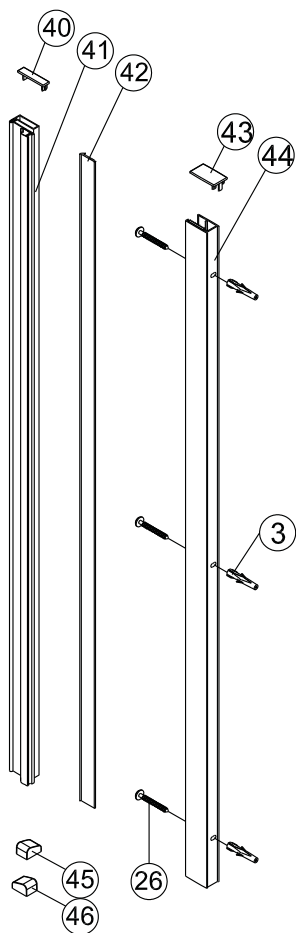
+ AM48195020



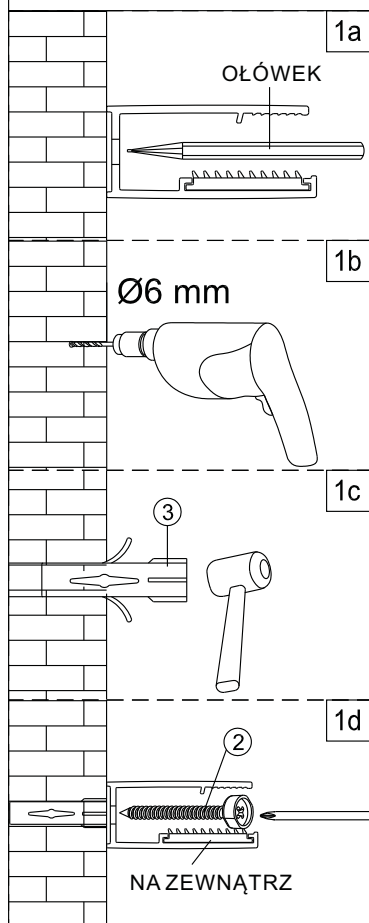
PR



C

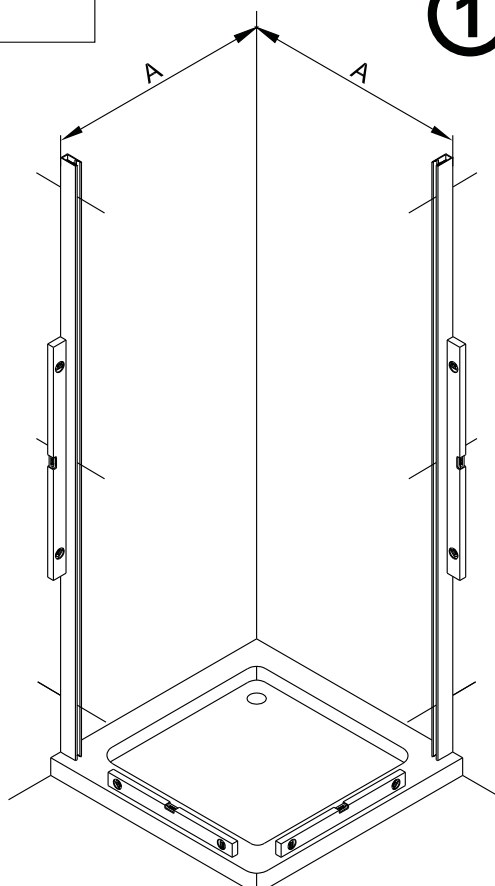


3 3X 	26 3X ST4X40 	40 1X
41 1X 	42 1X 	43 1X
44 1X 	45 1X 	46 1X



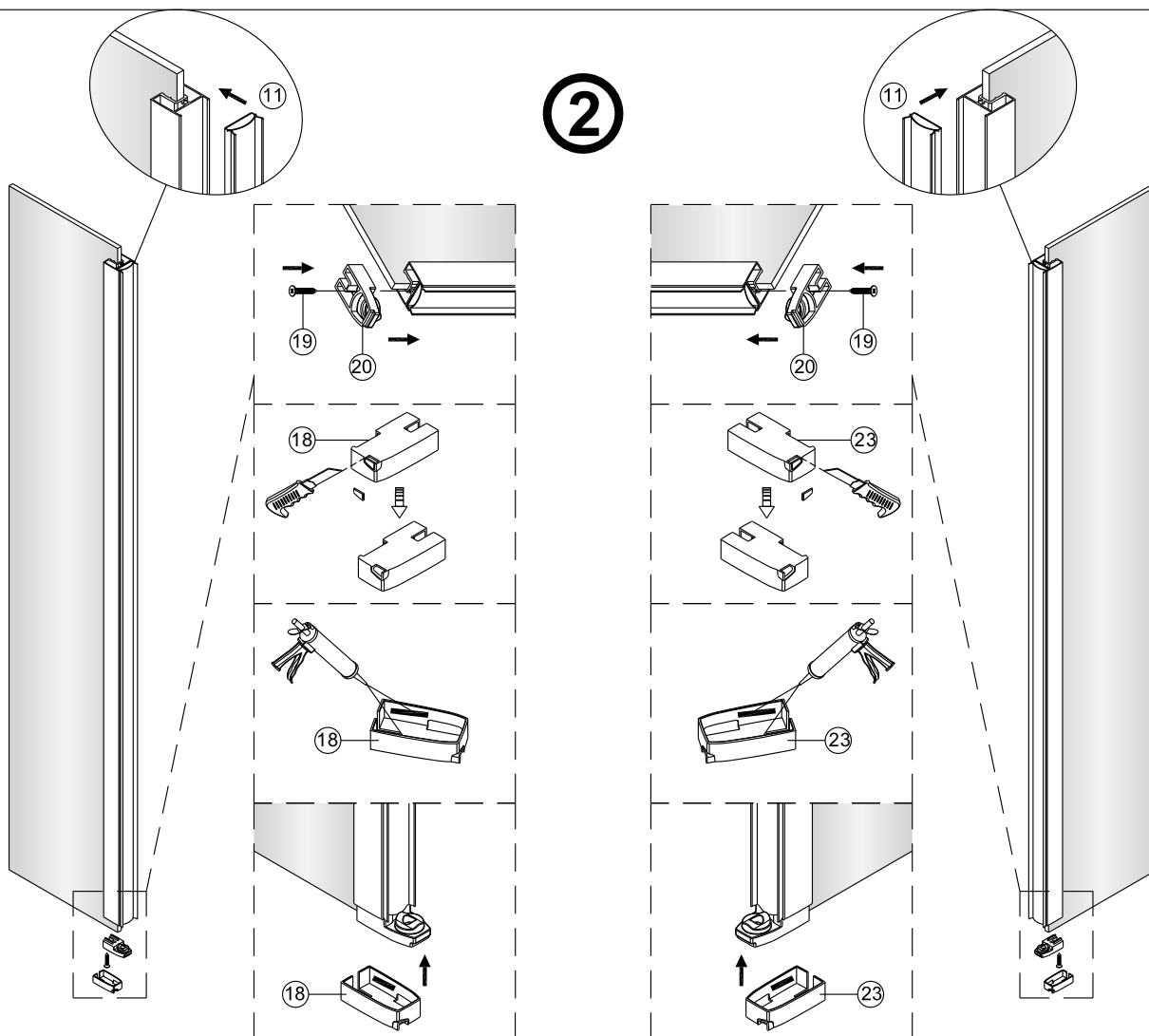
ZESTAW A

1

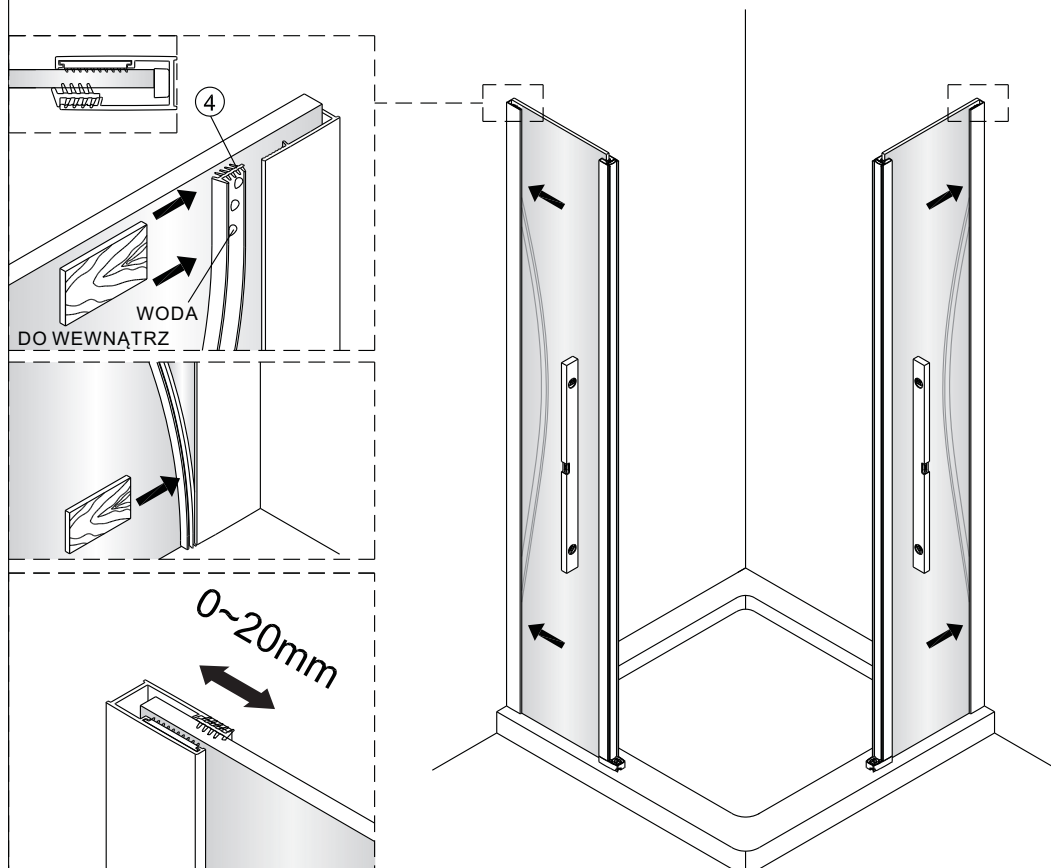


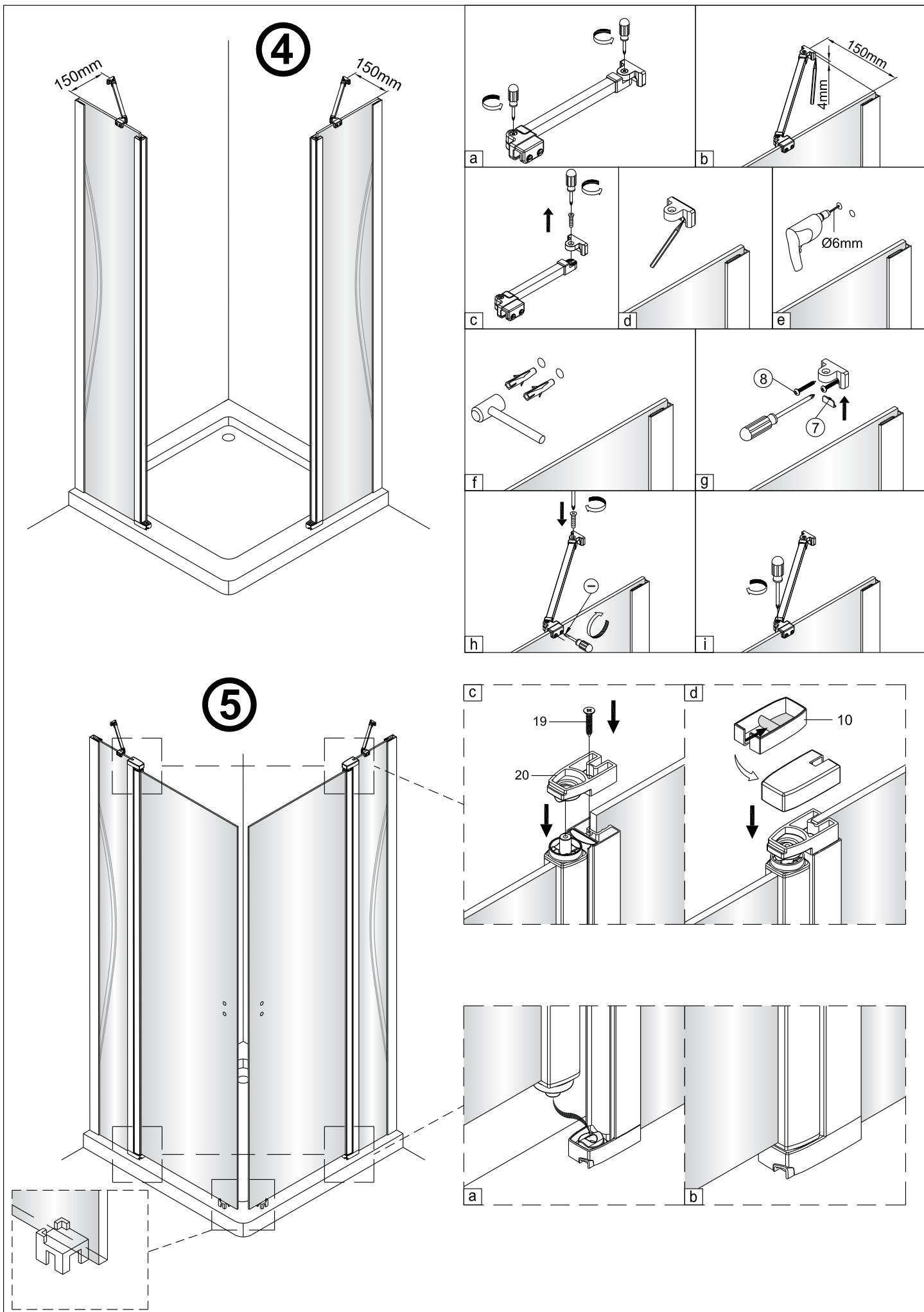
	A(mm)
800	767~787
900	867~887
1000	967~987

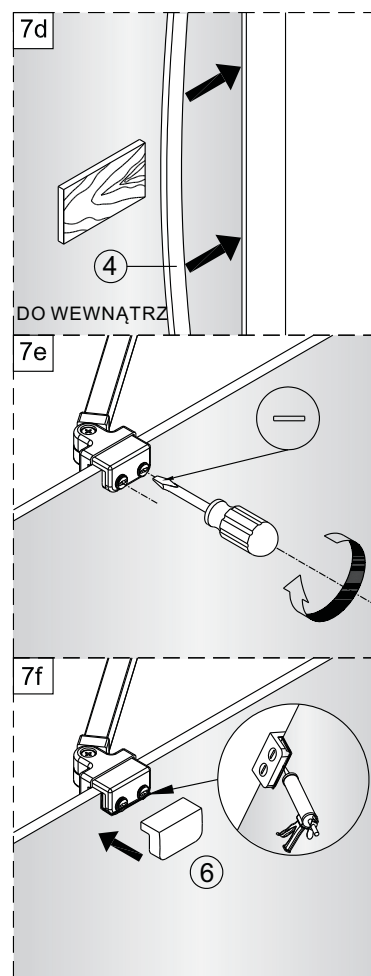
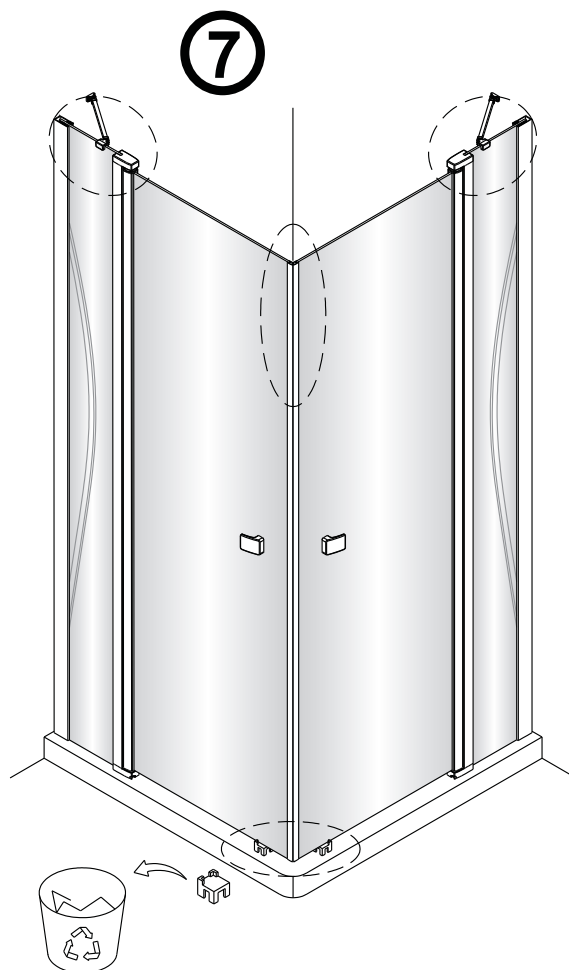
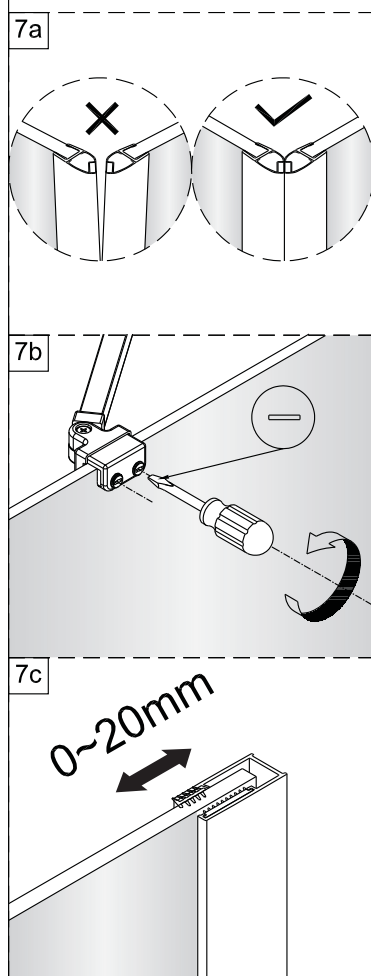
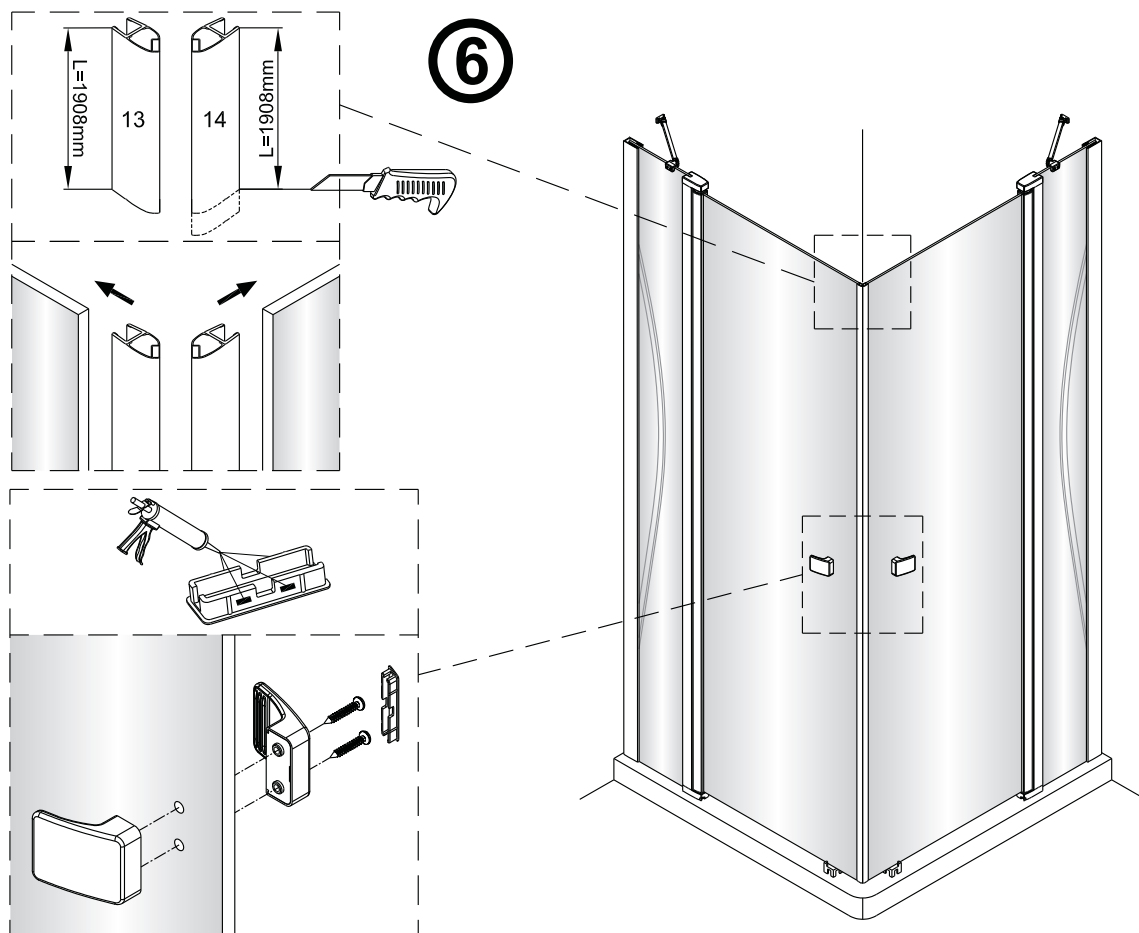
②

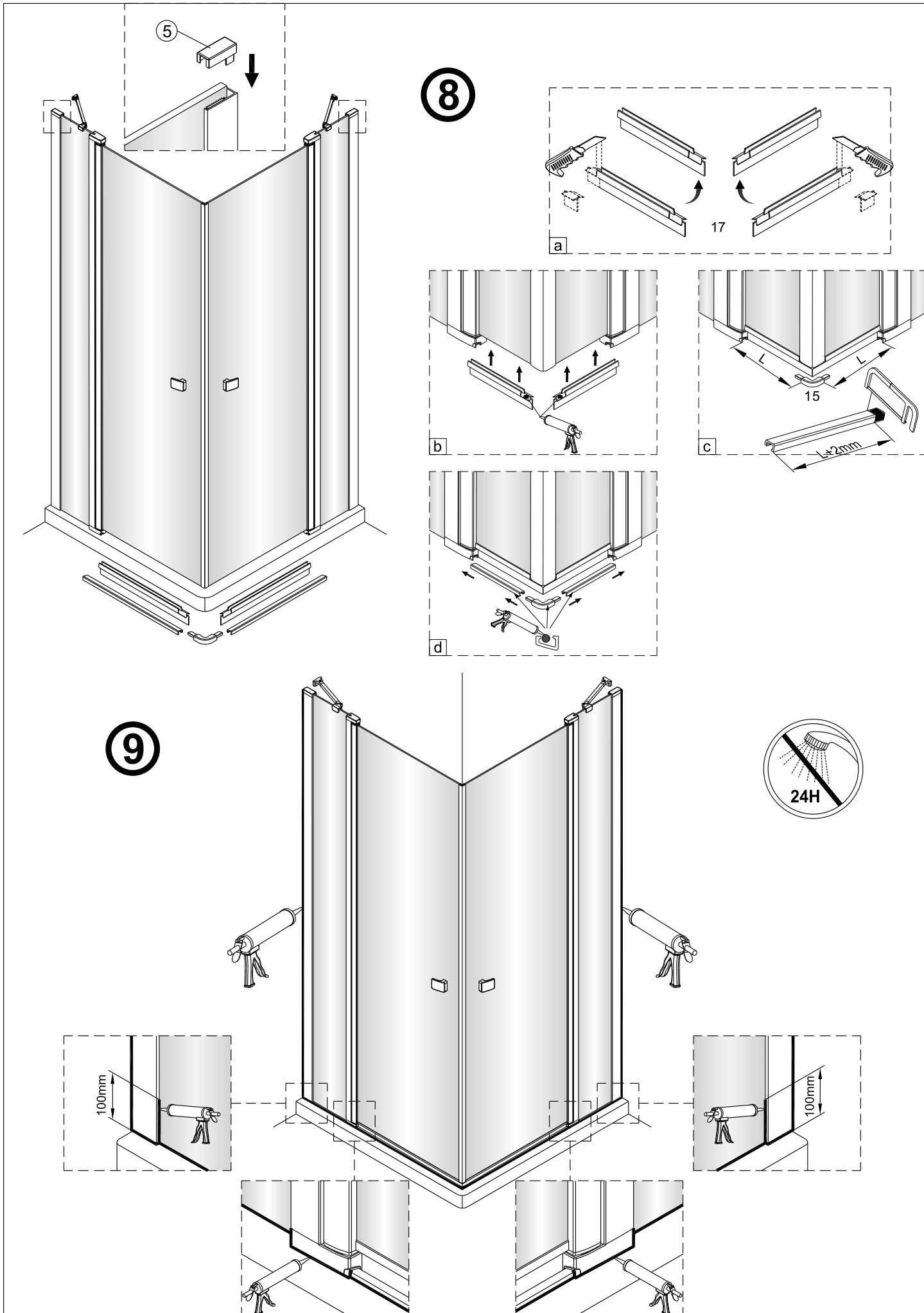


③







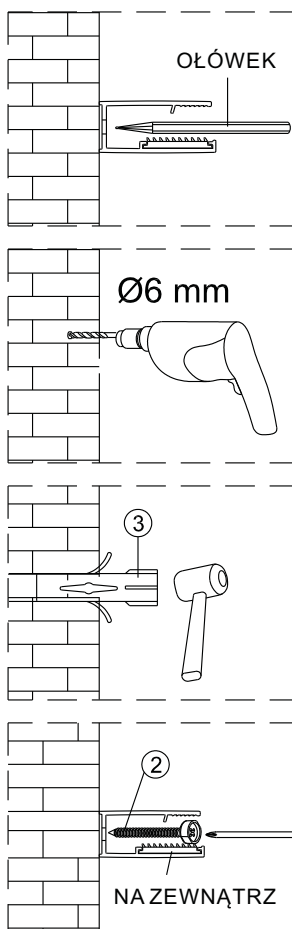
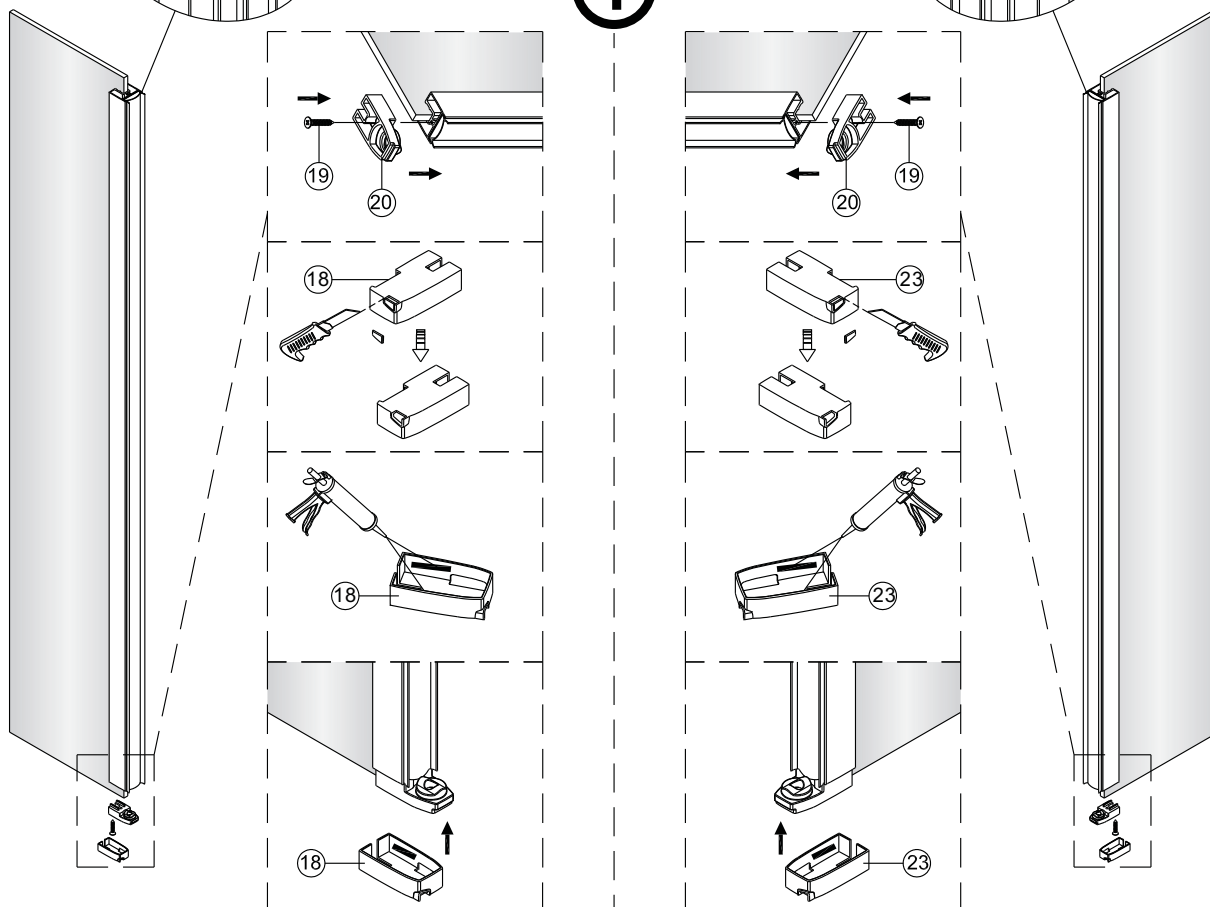


LEWA

ZESTAW B

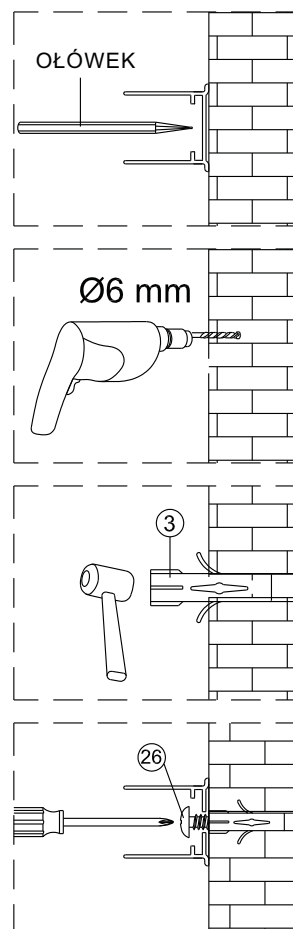
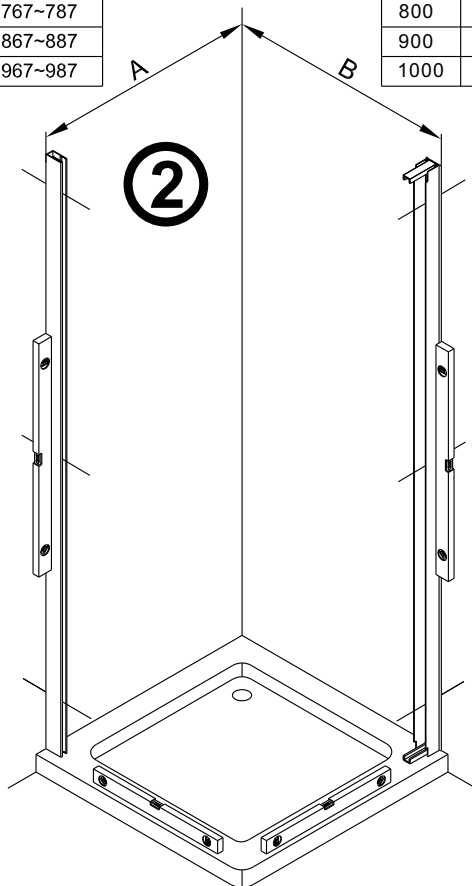
PRAWA

1

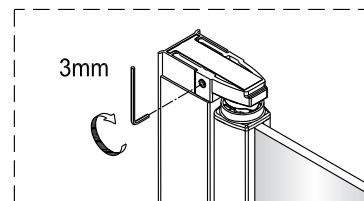
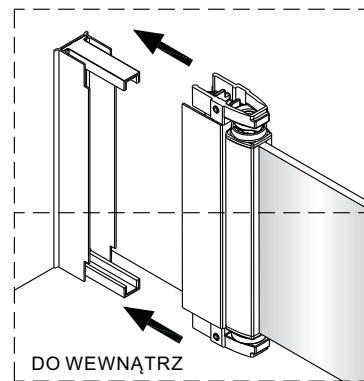
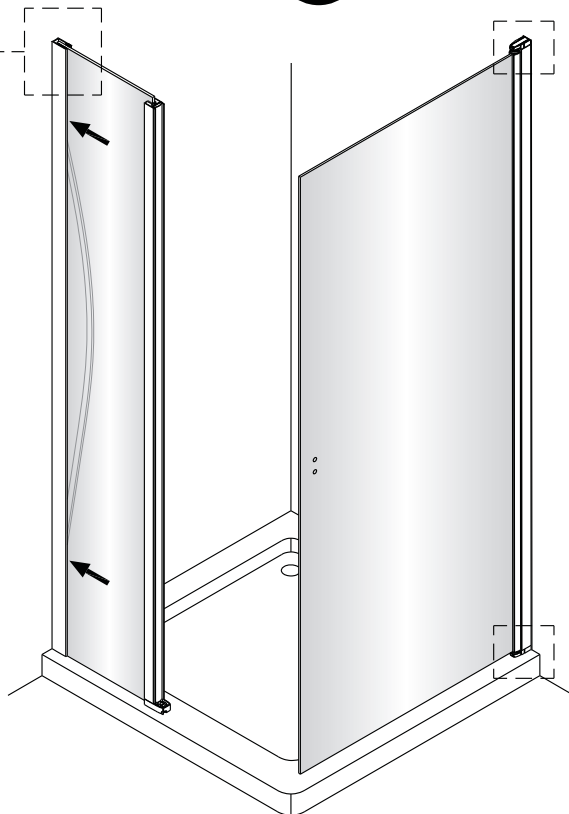
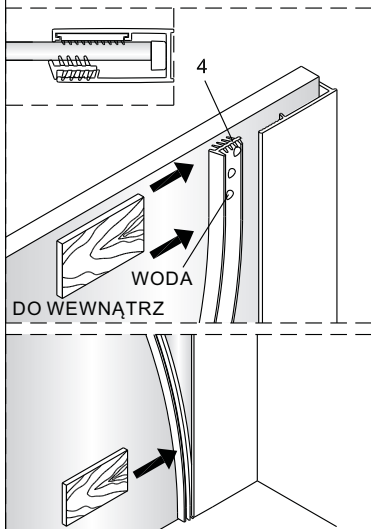


	A(mm)
800	767~787
900	867~887
1000	967~987

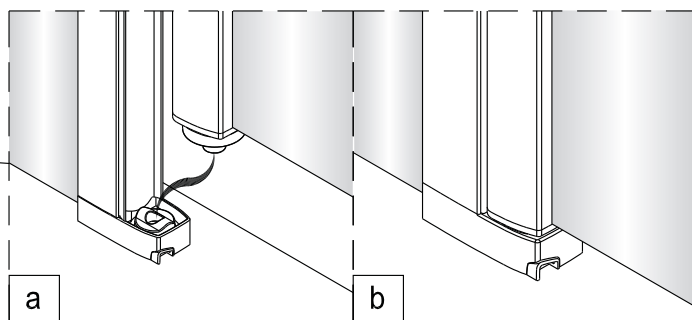
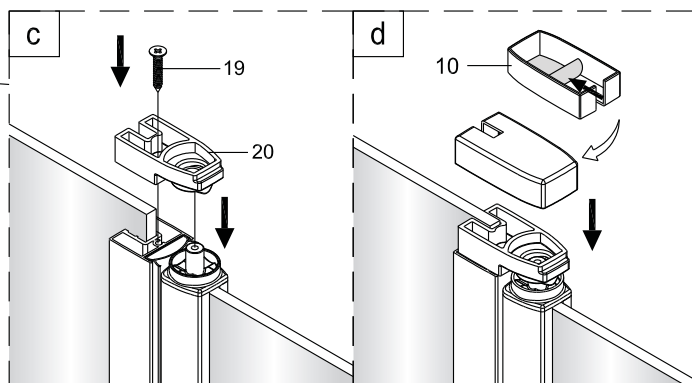
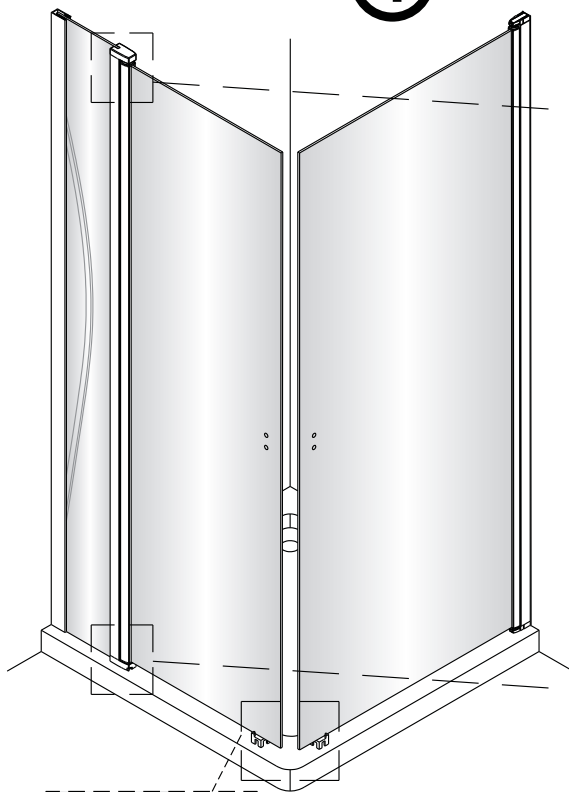
	B(mm)
800	775~795
900	875~895
1000	975~995



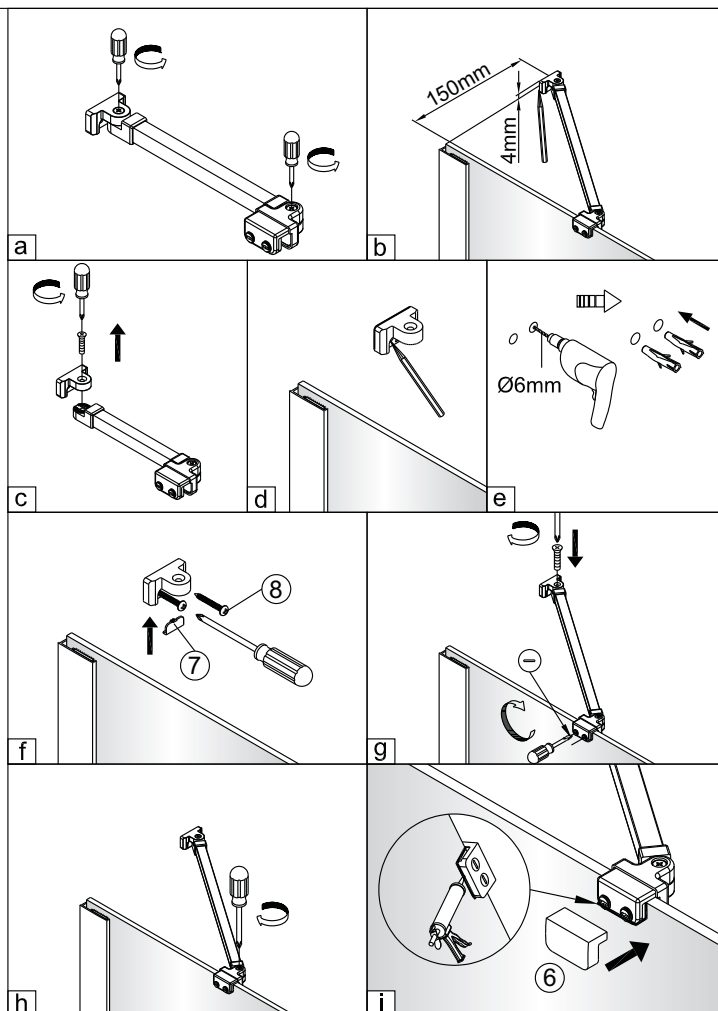
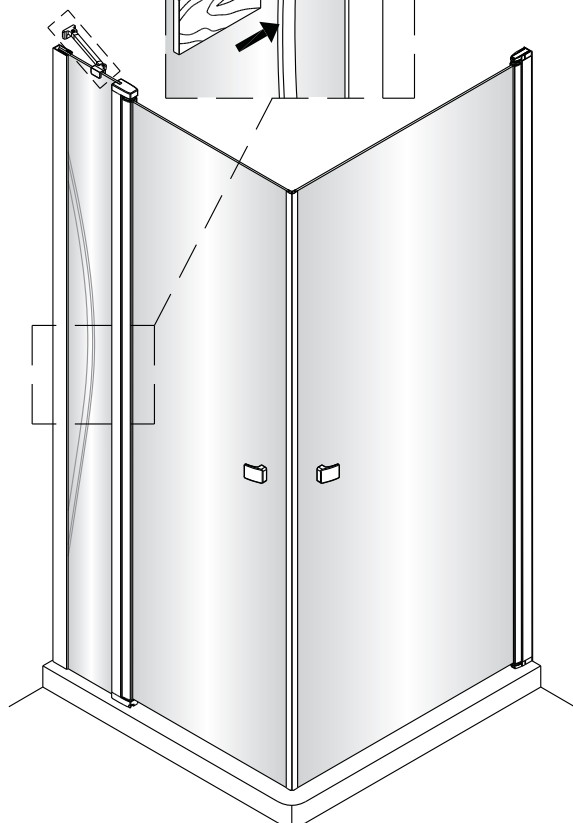
③



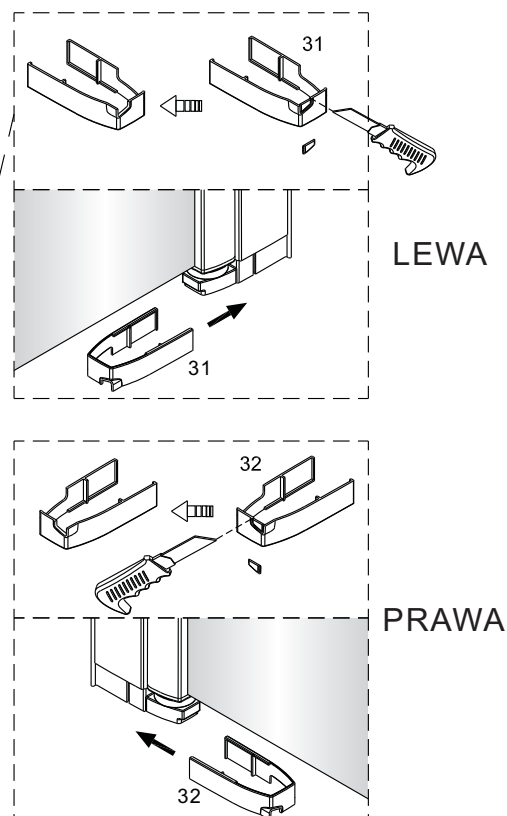
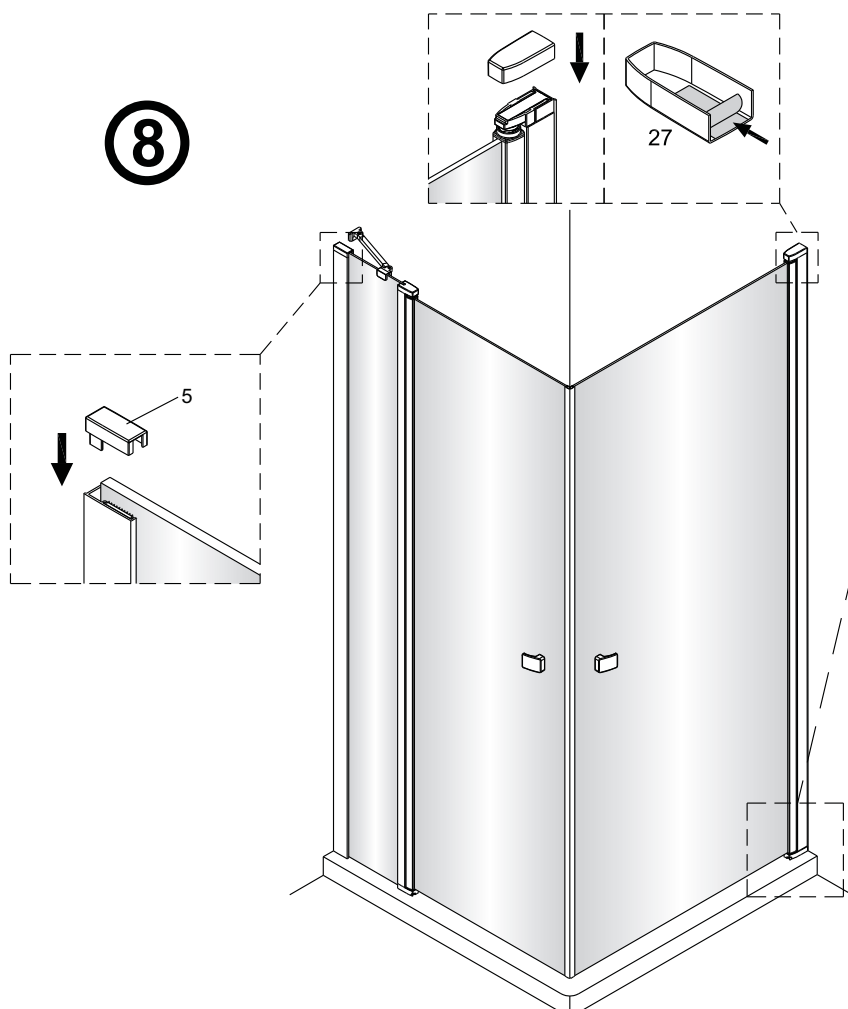
④

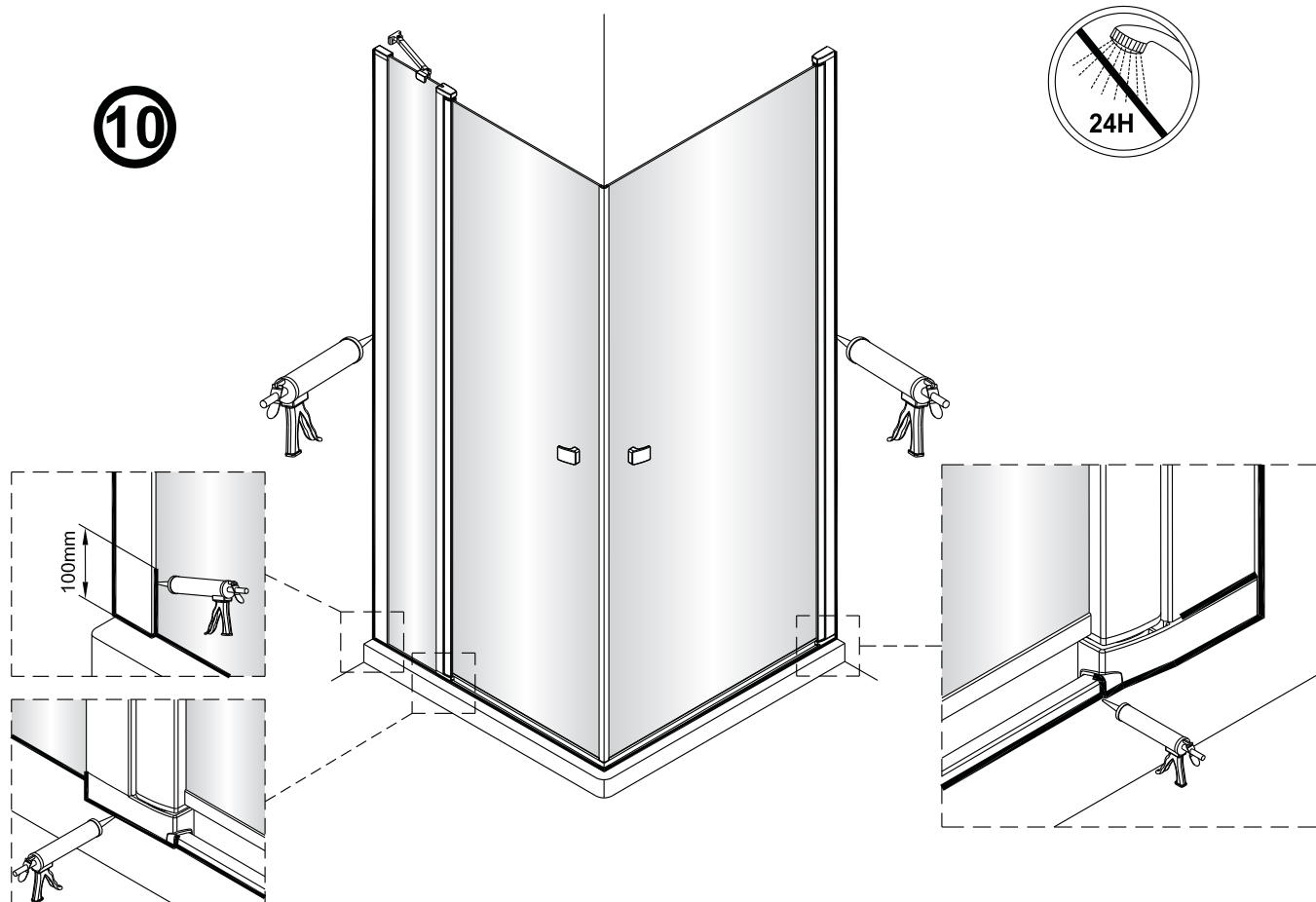
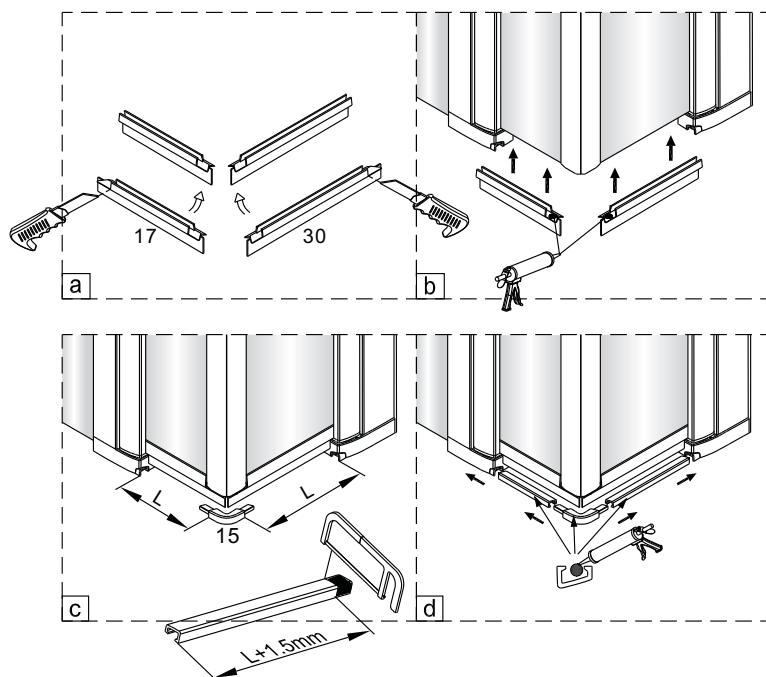
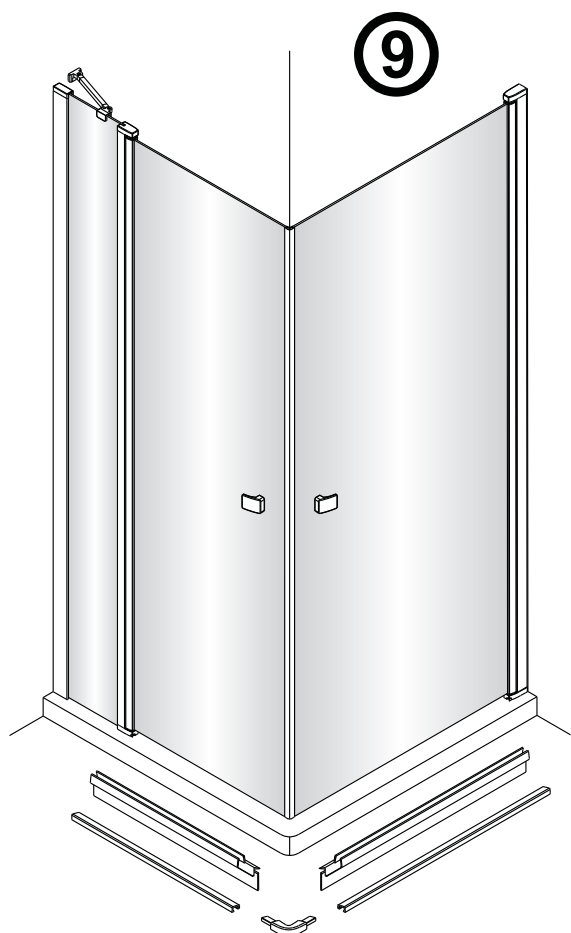


7



8





① SPÓJRZ NA KROK 1 Z ZESTAWU B

