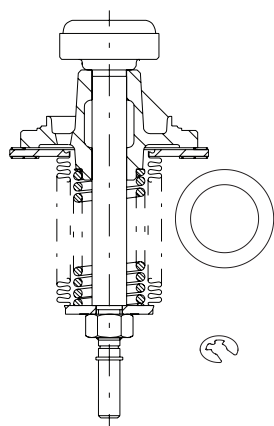
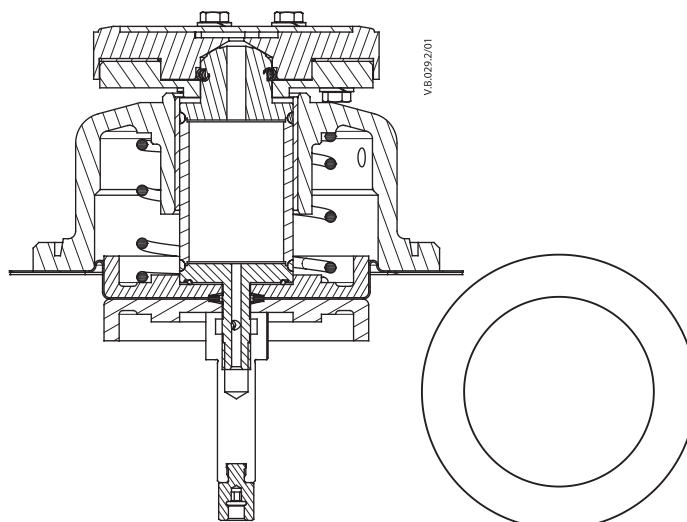


Installation Guide

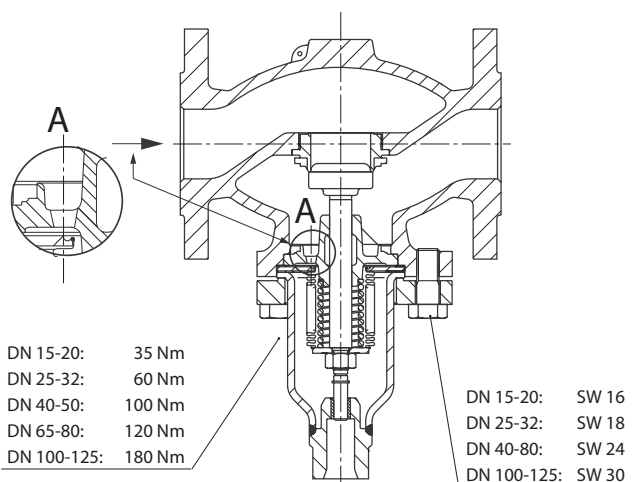
VFG, VFQ, VFU, VFGS, AFQM, PCV



VFG/Q/U/S 2 (DN15-125)
VFG/Q/U 21 (DN15-125)
AFQM (DN40-125)
PCV (DN100,125)



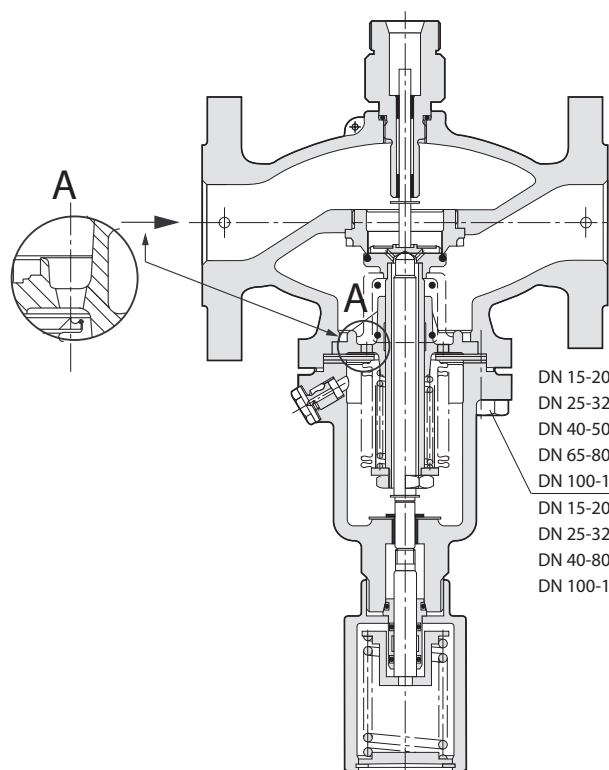
VFG/Q/S 2 (DN150, 250)
VFG/Q 21 (DN150)
PCV (DN150)



DN 15-20: 35 Nm
DN 25-32: 60 Nm
DN 40-50: 100 Nm
DN 65-80: 120 Nm
DN 100-125: 180 Nm

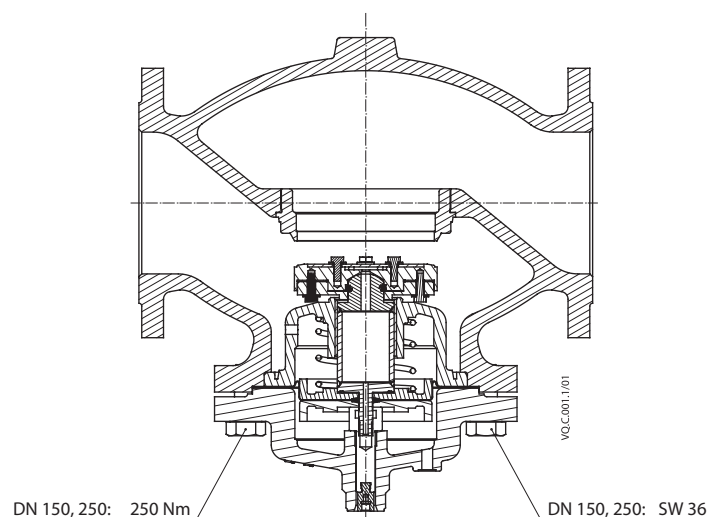
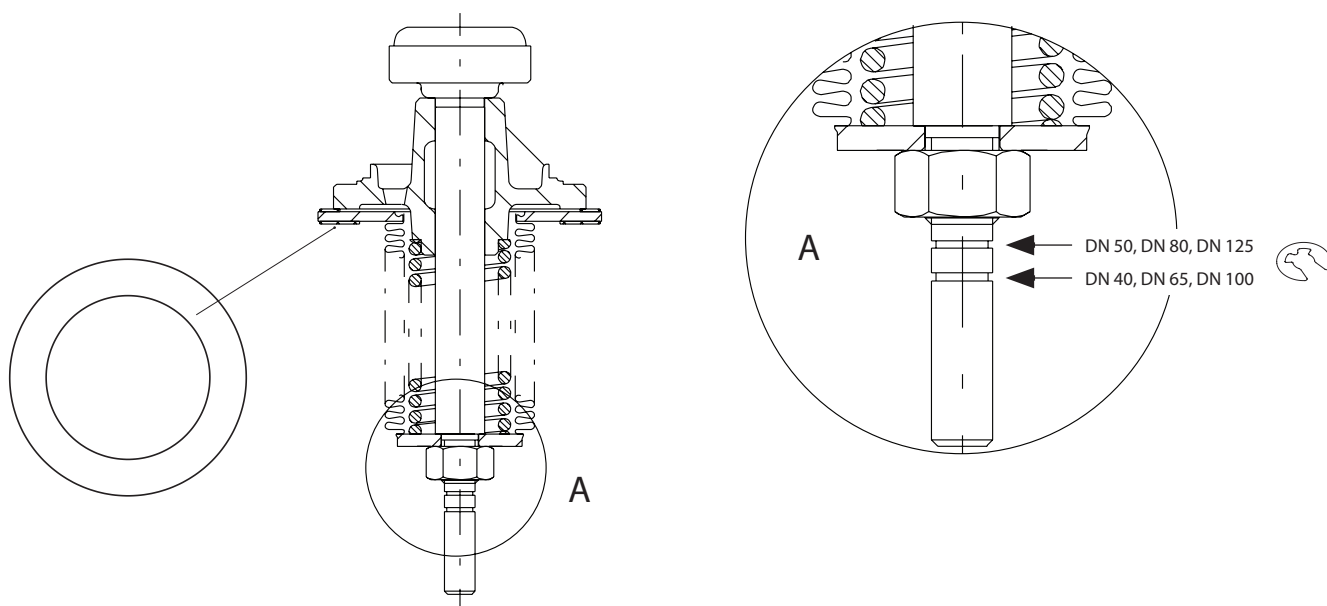
DN 15-20: SW 16
DN 25-32: SW 18
DN 40-80: SW 24
DN 100-125: SW 30

VFG, VFGS, VFQ, VFQM



DN 15-20: 35 Nm
DN 25-32: 60 Nm
DN 40-50: 100 Nm
DN 65-80: 120 Nm
DN 100-125: 180 Nm
DN 15-20: SW 16
DN 25-32: SW 18
DN 40-80: SW 24
DN 100-125: SW 30

VFU



VFG, VFQ, VFGS, PCV