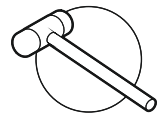
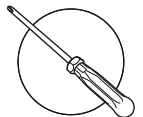
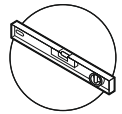
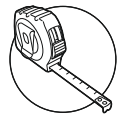
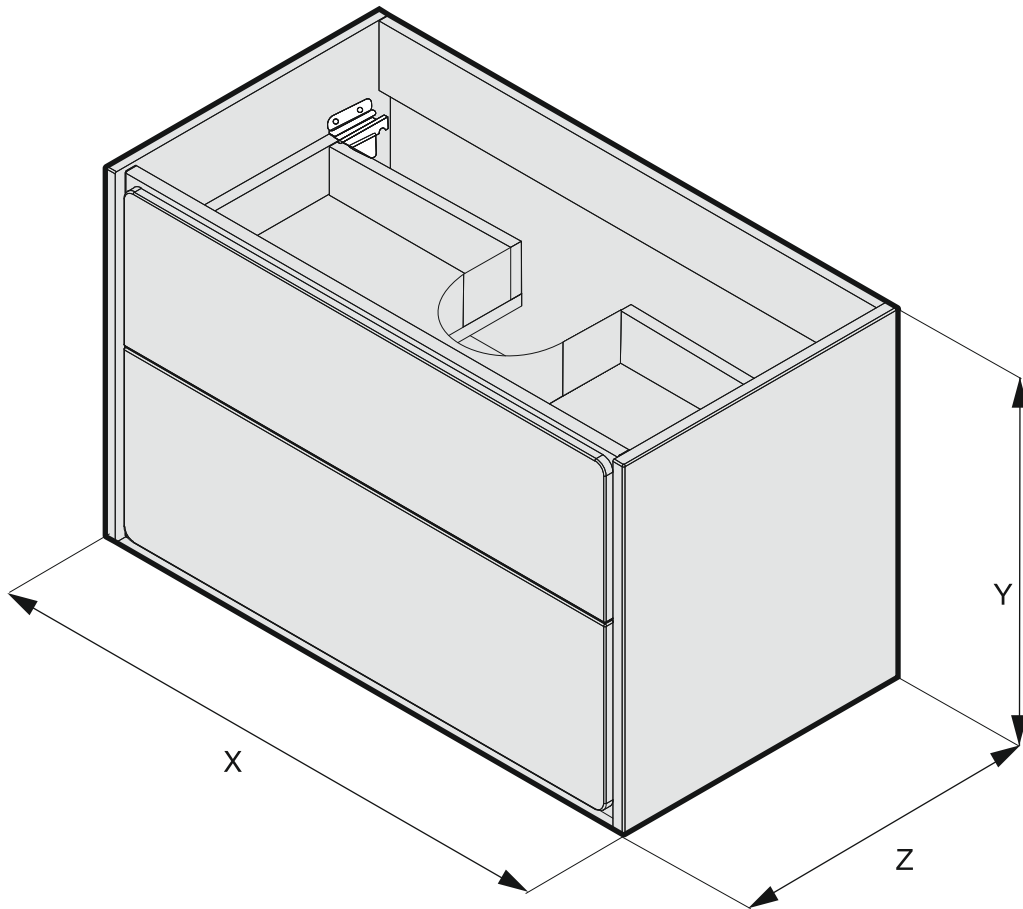


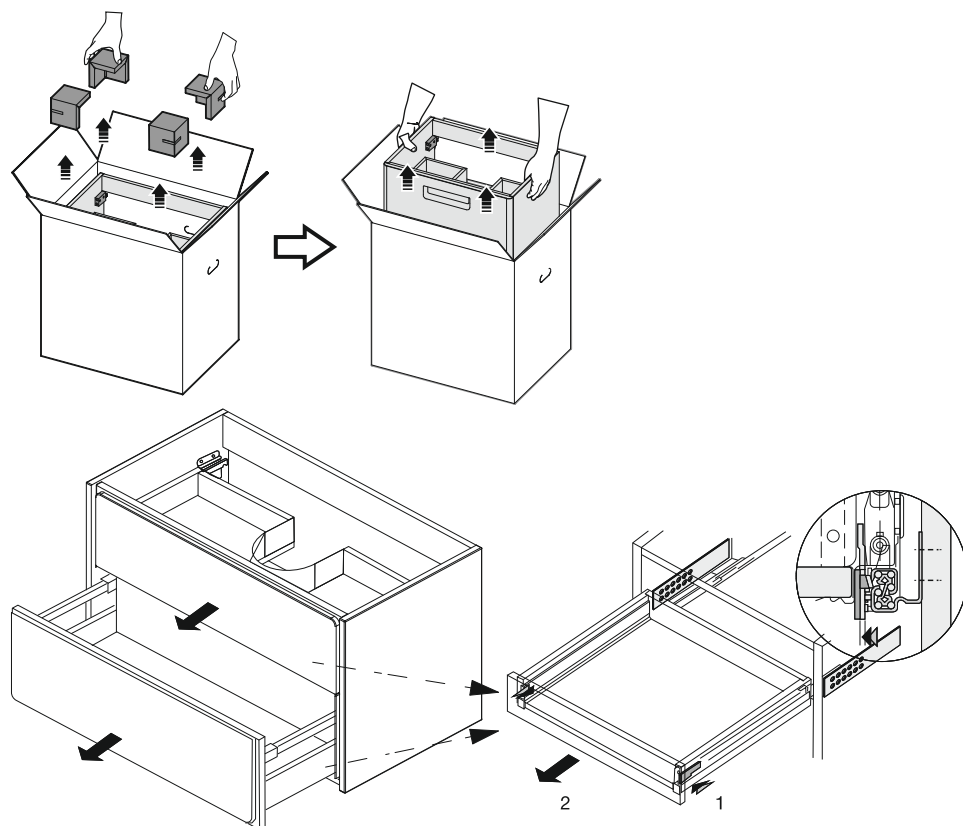
# Roca

## RONDA BASE UNIT

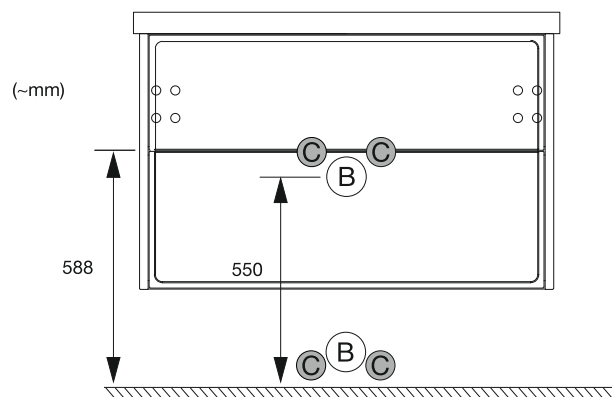


		mm		
		X	Y	Z
A	857341...	577	480	412
	857354...	577	480	412
	857359...	577	480	412
	857342...	677	480	412
	857355...	677	480	412
	857360...	677	480	412
	857343...	777	480	412
	857356...	777	480	412
	857361...	777	480	412

1

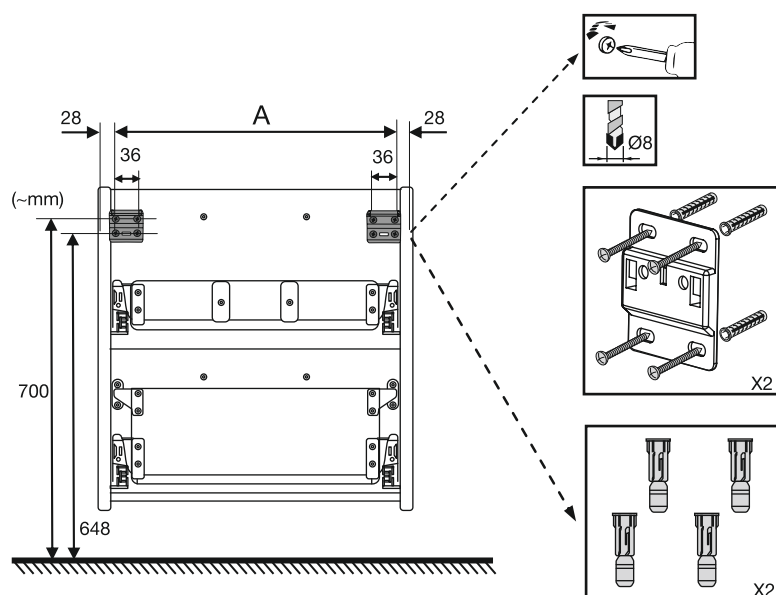


2



3

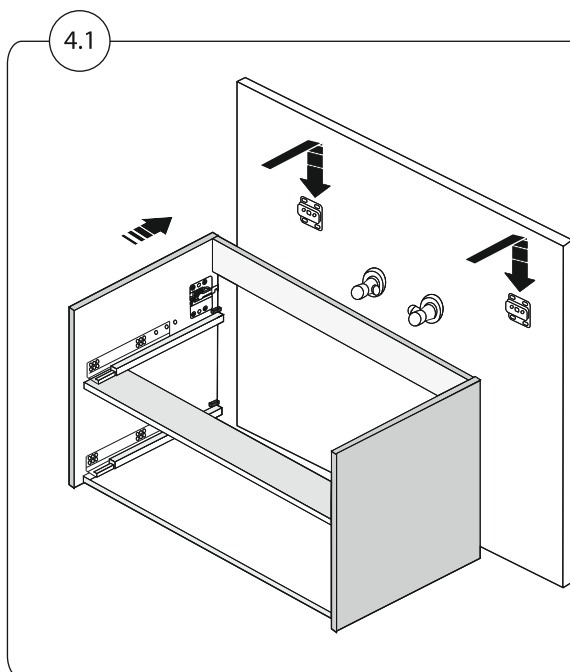
	mm
857341...	521
857354...	521
857359...	521
857342...	621
A 857355...	621
857360...	621
857343...	721
857356...	721
857361...	721



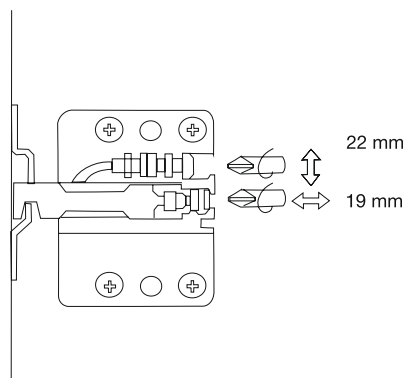
4



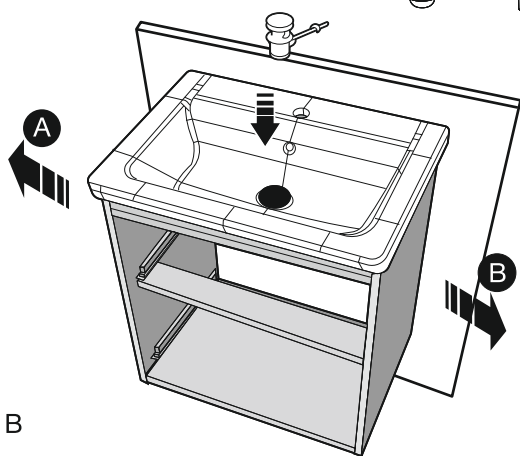
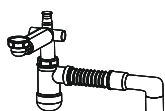
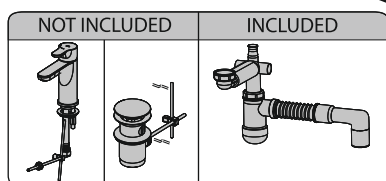
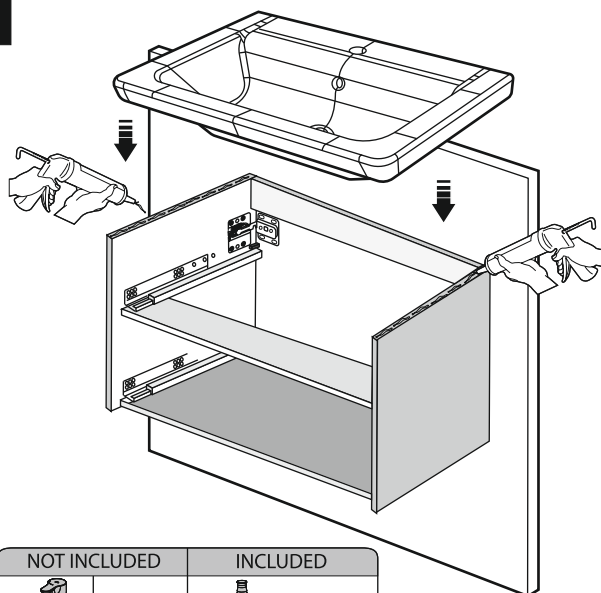
4.1



4.2



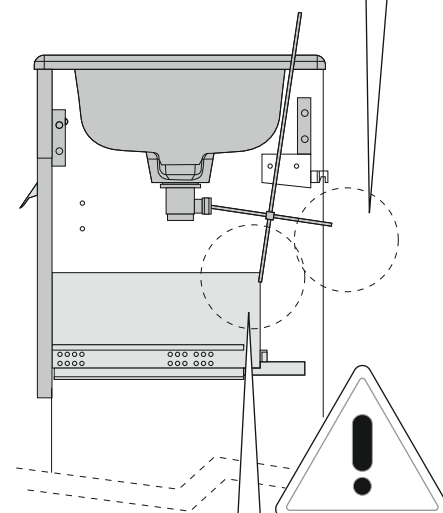
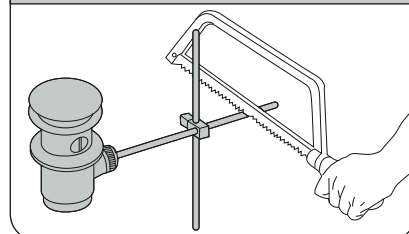
5



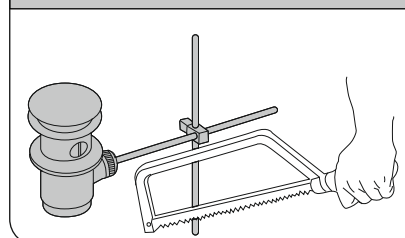
A = B

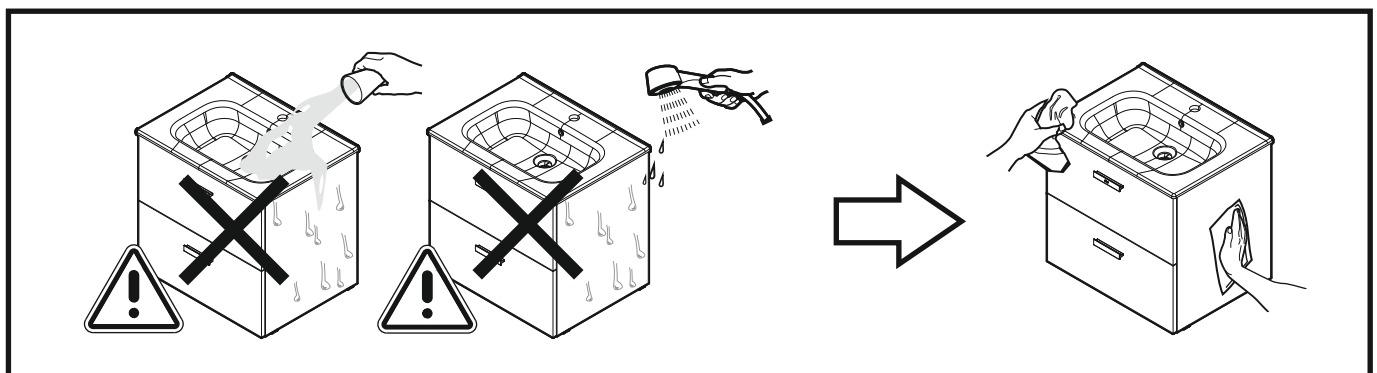
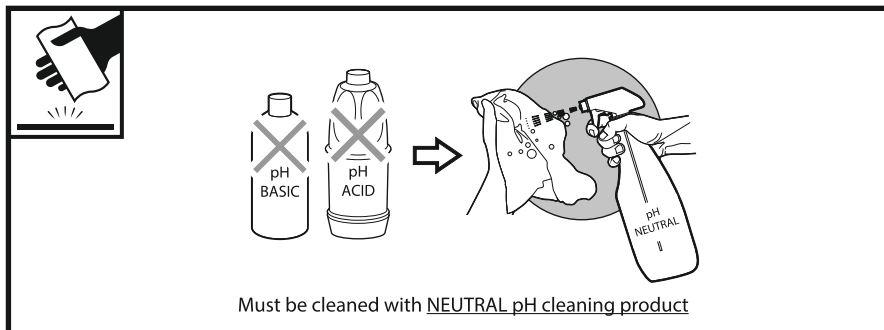
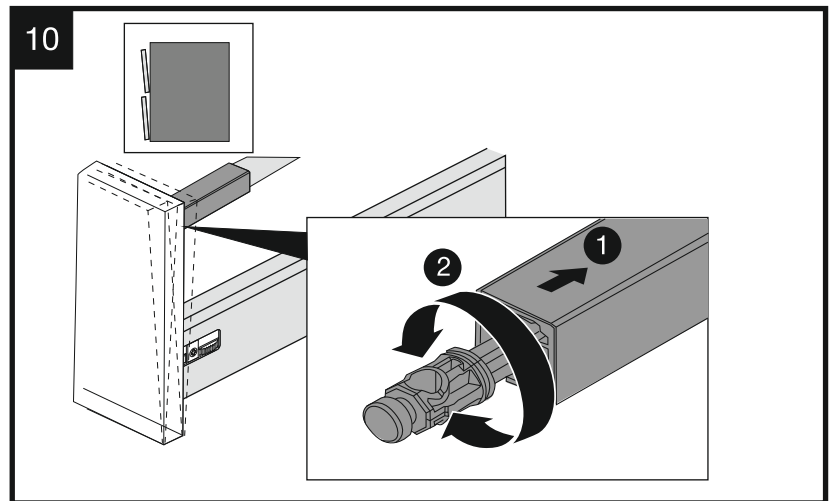
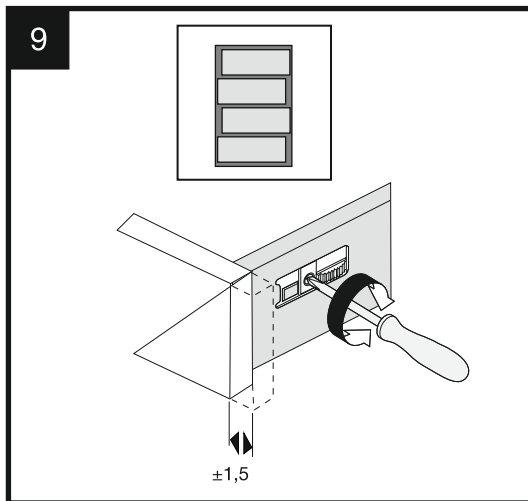
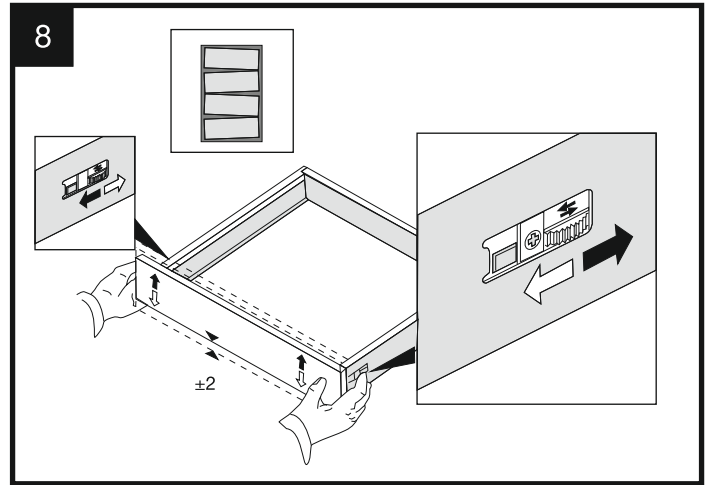
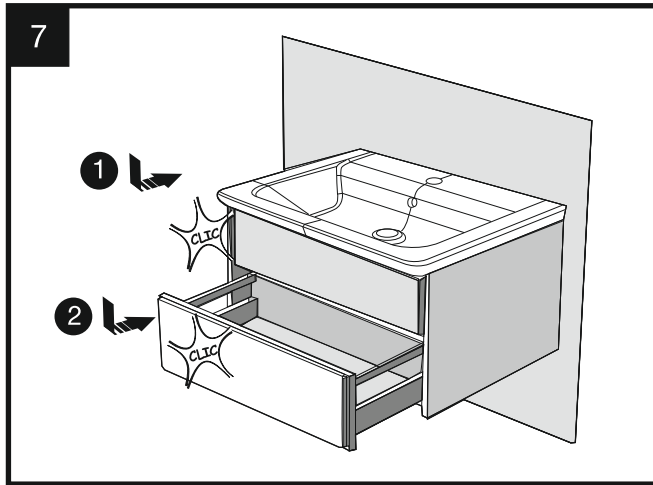
6

INTERFERENCE



INTERFERENCE





DIN A4

**Roca**

Roca Sanitario, S.A.  
Avda. Diagonal, 513  
08029 Barcelona  
SPAIN  
[www.roca.com](http://www.roca.com)

**+34  
933  
661  
266**

CUSTOMER  
SERVICES  
TECHNICAL  
DEPARTMENT



[productsupport.rs@roca.net](mailto:productsupport.rs@roca.net)  
[soporteproducto.rs@roca.net](mailto:soporteproducto.rs@roca.net)

XXXX