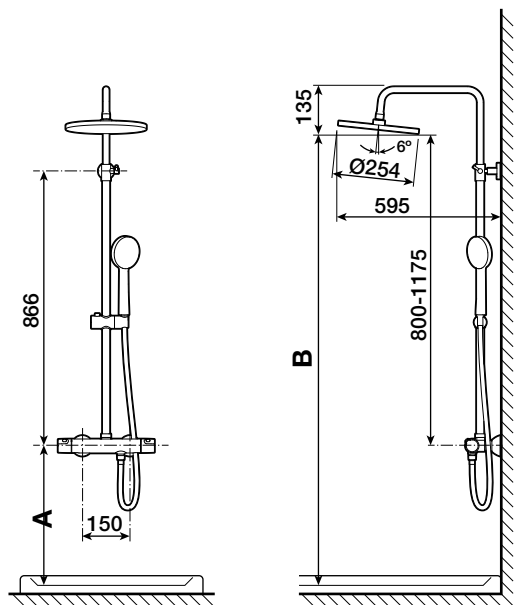


**Roca**

# VICTORIA

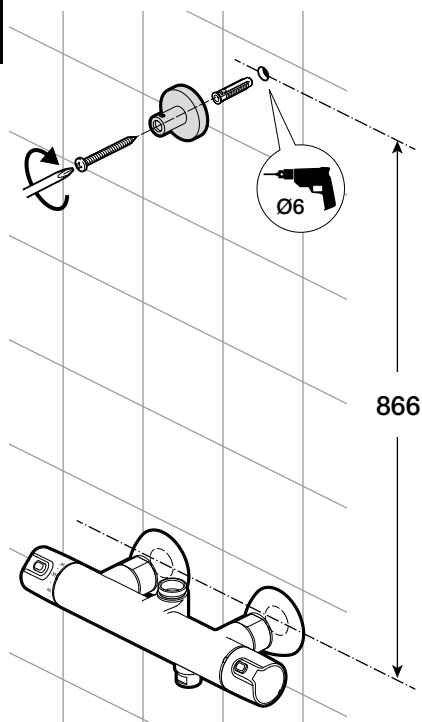
A5A2C18



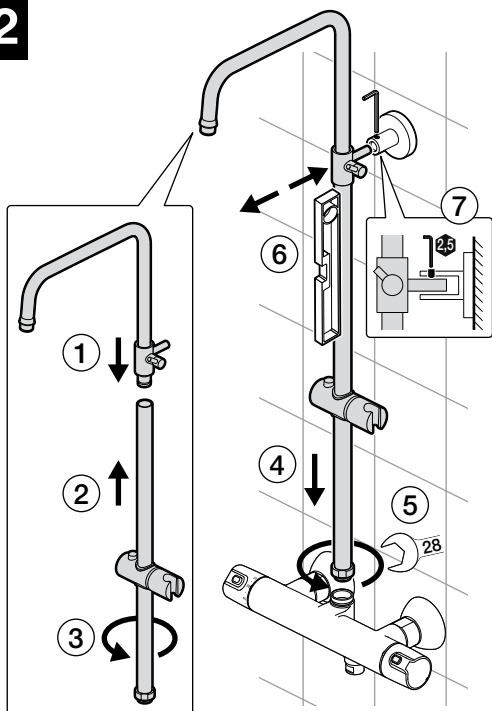


<b>A</b>	900	1000	1100	1200
<b>B</b>	1700-2075	1800-2175	1900-2275	2000-2375

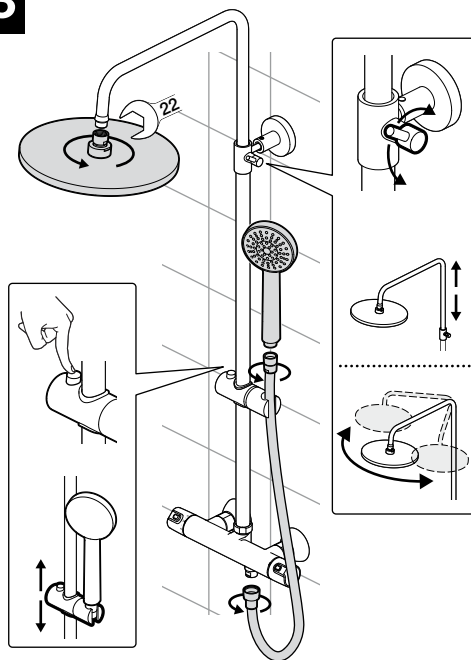
**1**



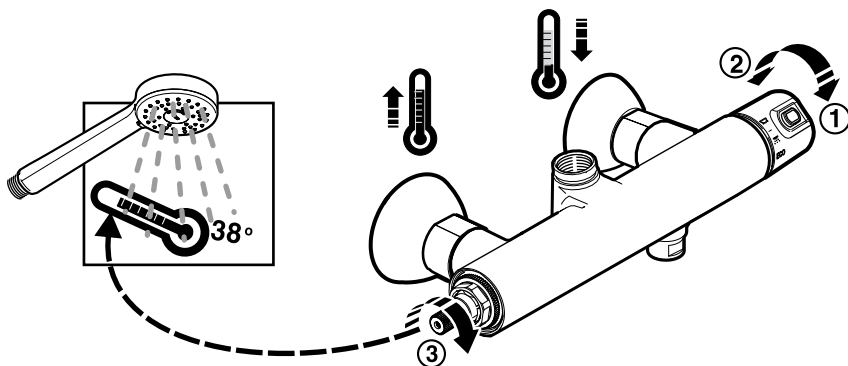
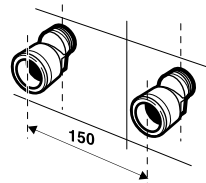
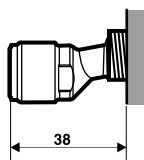
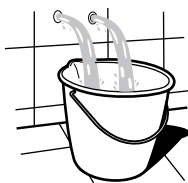
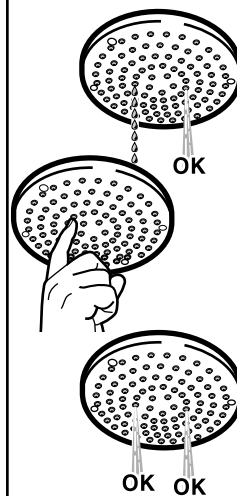
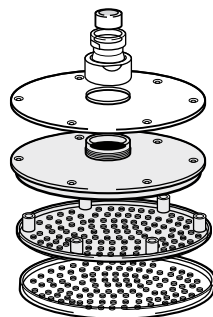
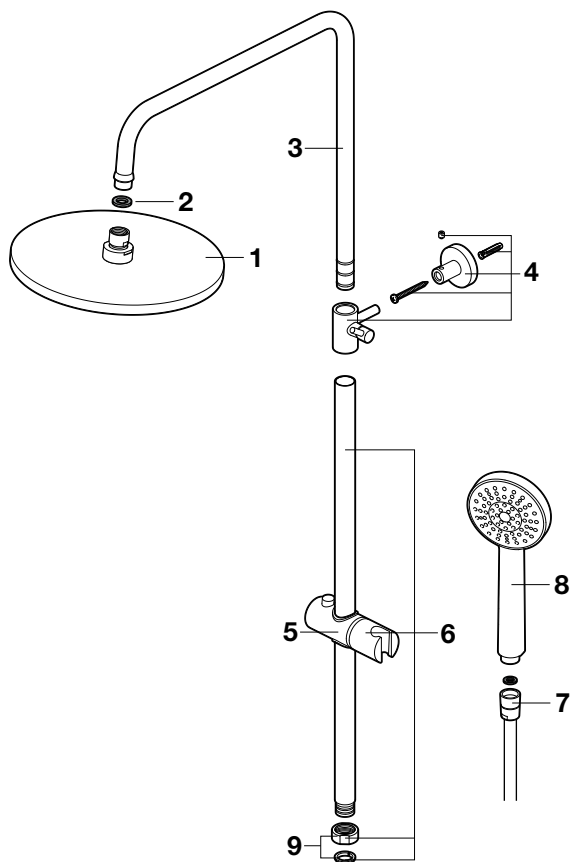
**2**

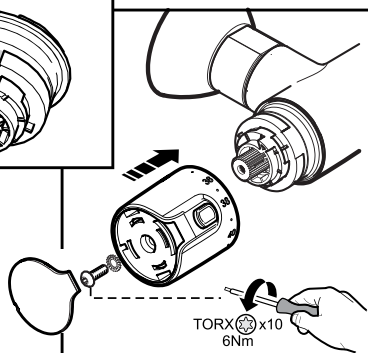
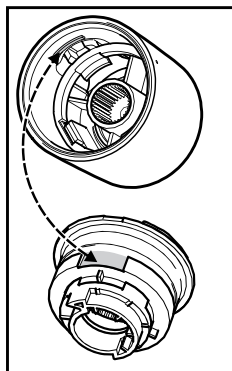
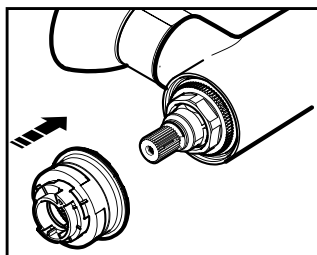
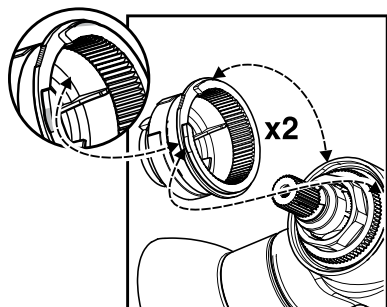
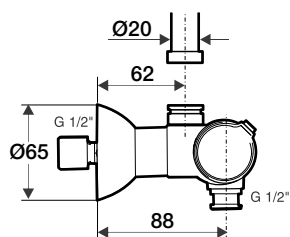
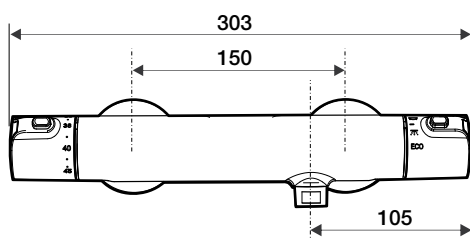
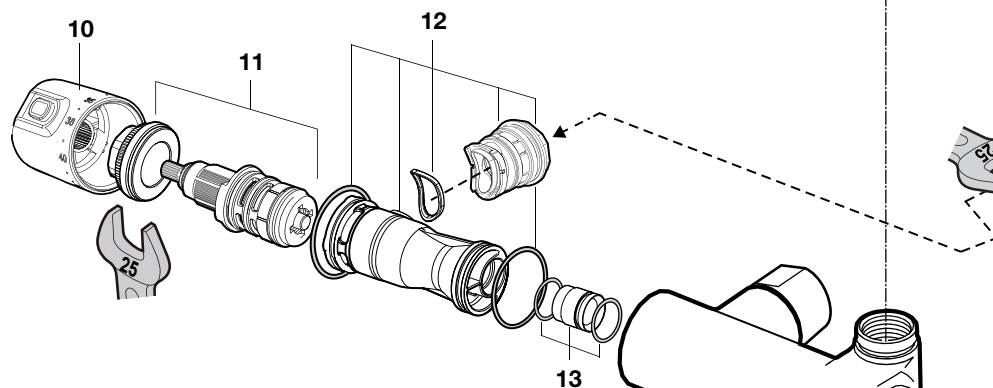


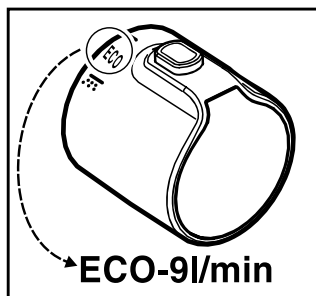
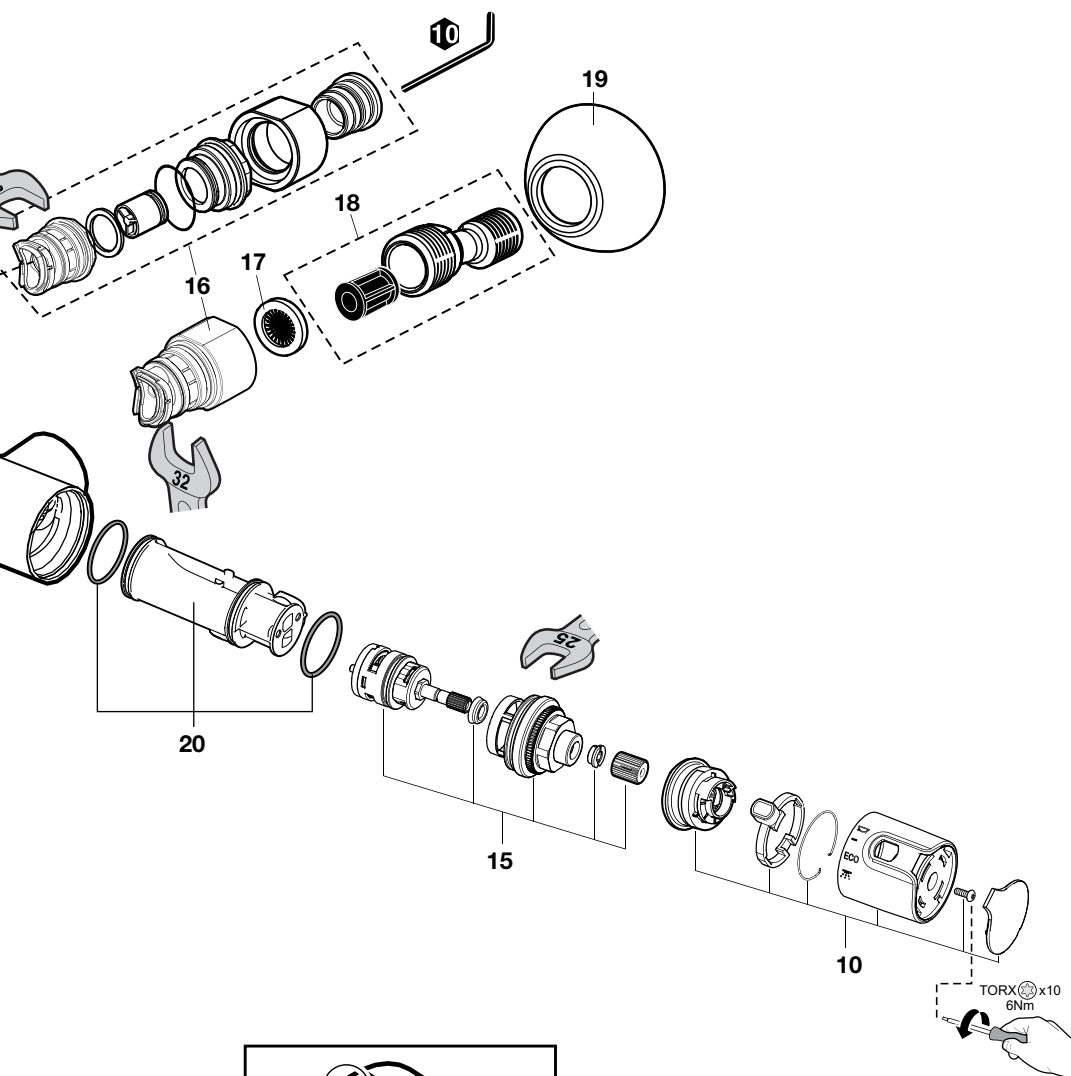
**3**

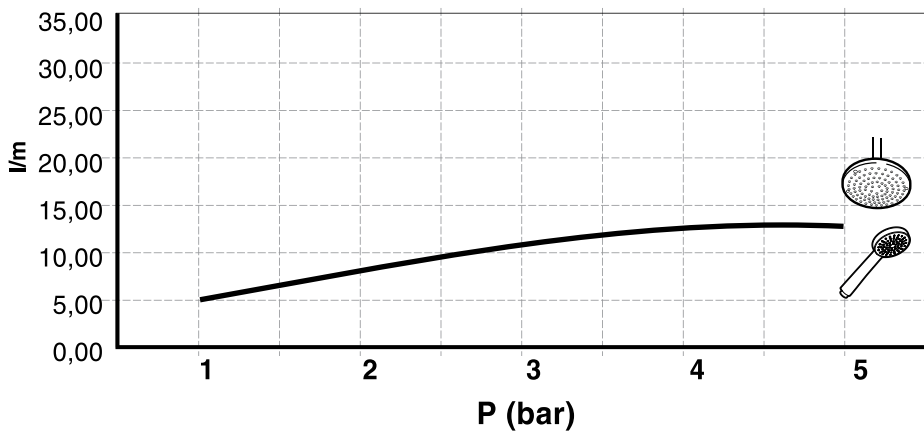










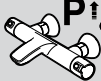







5







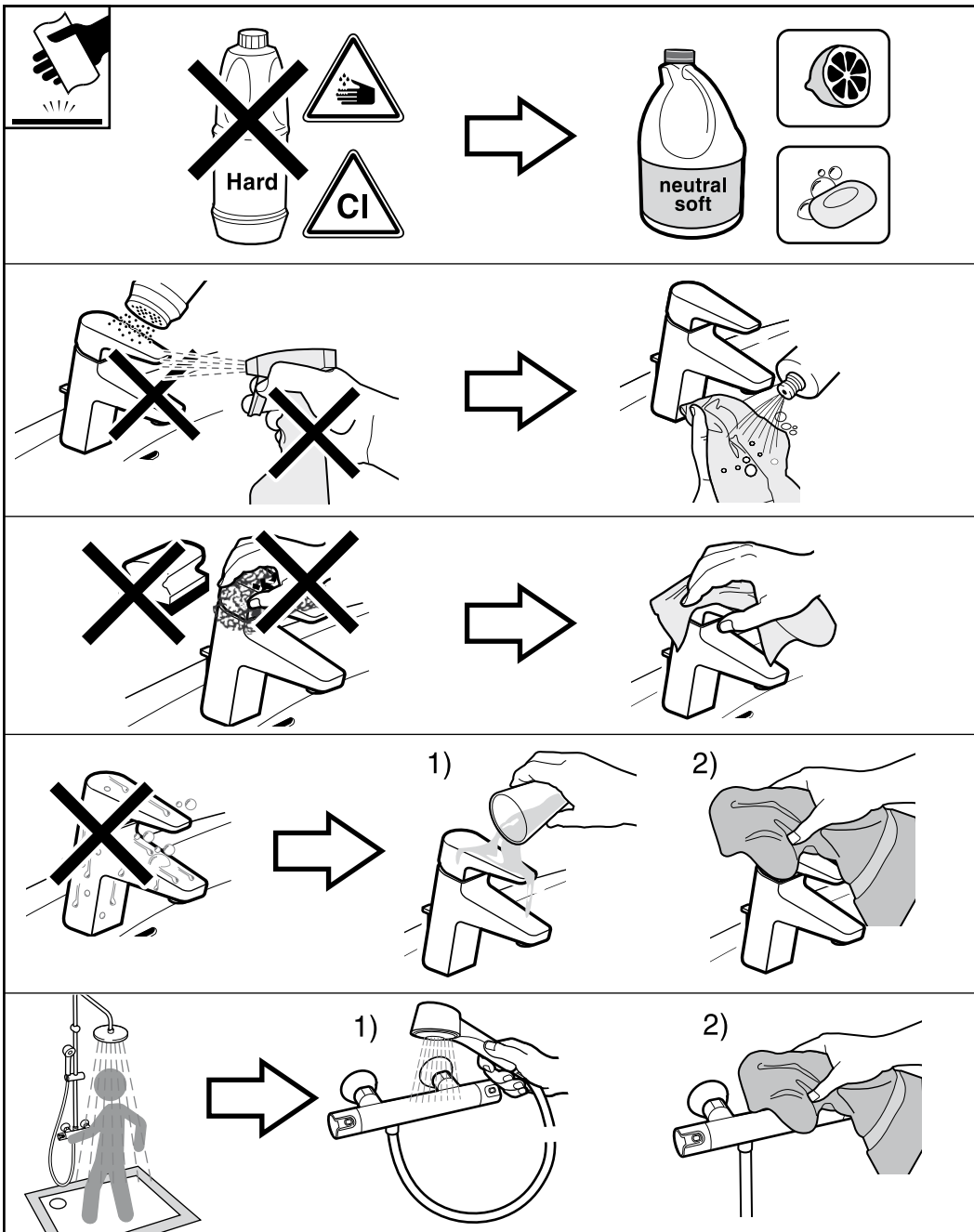


 <b>P</b> 	<b>P</b> bar	 MAX. 10	
 <b>P</b> 	<b>P</b> bar	 MIN. 0,5 MAX. 5	 3 MAX. 10 
		 $P_{\uparrow} - P_{\downarrow} \leq 2$	$P_{\downarrow} - P_{\uparrow} \leq 2$
 <b>T</b>	<b>°C</b>	 80 MAX. 45 MIN.	 65 MAX. 50 MIN. 
 <b>Q</b> ( 3 bar )	<b>l/min</b>	 12 	

1	-	AG0087300R
2	-	AG0056807R
3	-	AG0220400R
4	-	AG0220700R
5	-	AG0220600R
6	-	AG0220300R
7	-	A525009800

8	-	A5B9A03C00
9	-	AG0220500R
10	-	AG0041600R
11	-	A525015803
12	-	AG0172900R
13	-	A525017203
14	-	A525016609

15	-	AG0151300R
16	-	AG0131300R
17	-	A525016207 (2 un)
18	-	AG0156900R (2 un)
19	-	AG0085400R (2 un)
20	-	A525016707



A563098607c