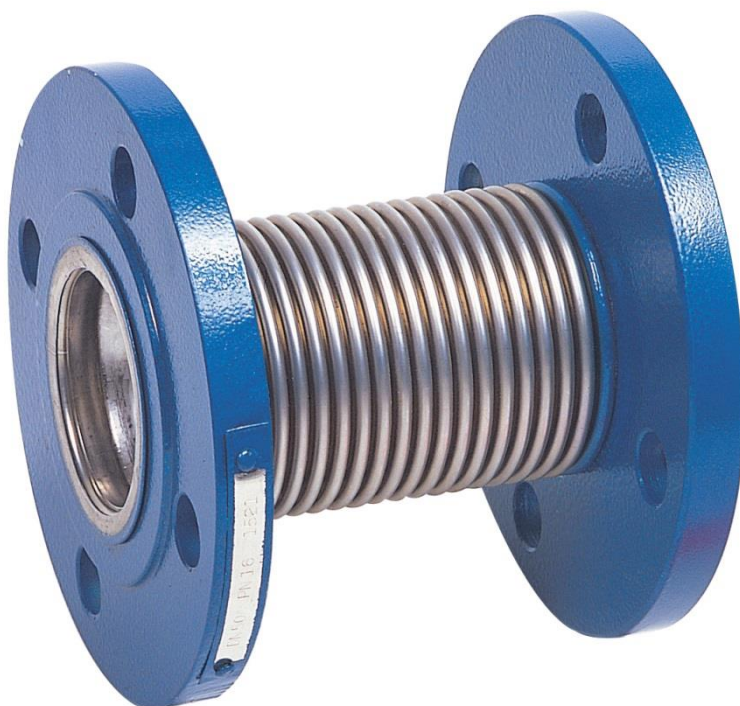


CARBON STEEL METAL EXPANSION JOINT WITH STAINLESS STEEL BELLOW FLANGED PN16

Carbon steel metal expansion joint with swiveling flanges, stainless steel bellow for high temperature networks.

Axial movement only.

With internal liner.



Size : DN25 to DN250
Connection : Flanges PN16 RF
Min Temperature : -20°C
Max Temperature : +300°C
Max Pressure : 16 Bars
Specifications : Axial movement
Stainless steel bellow
With internal liner
Swiveling flanges

Materials : Carbon steel flanges

CARBON STEEL METAL EXPANSION JOINT WITH STAINLESS STEEL BELLOW FLANGED PN16

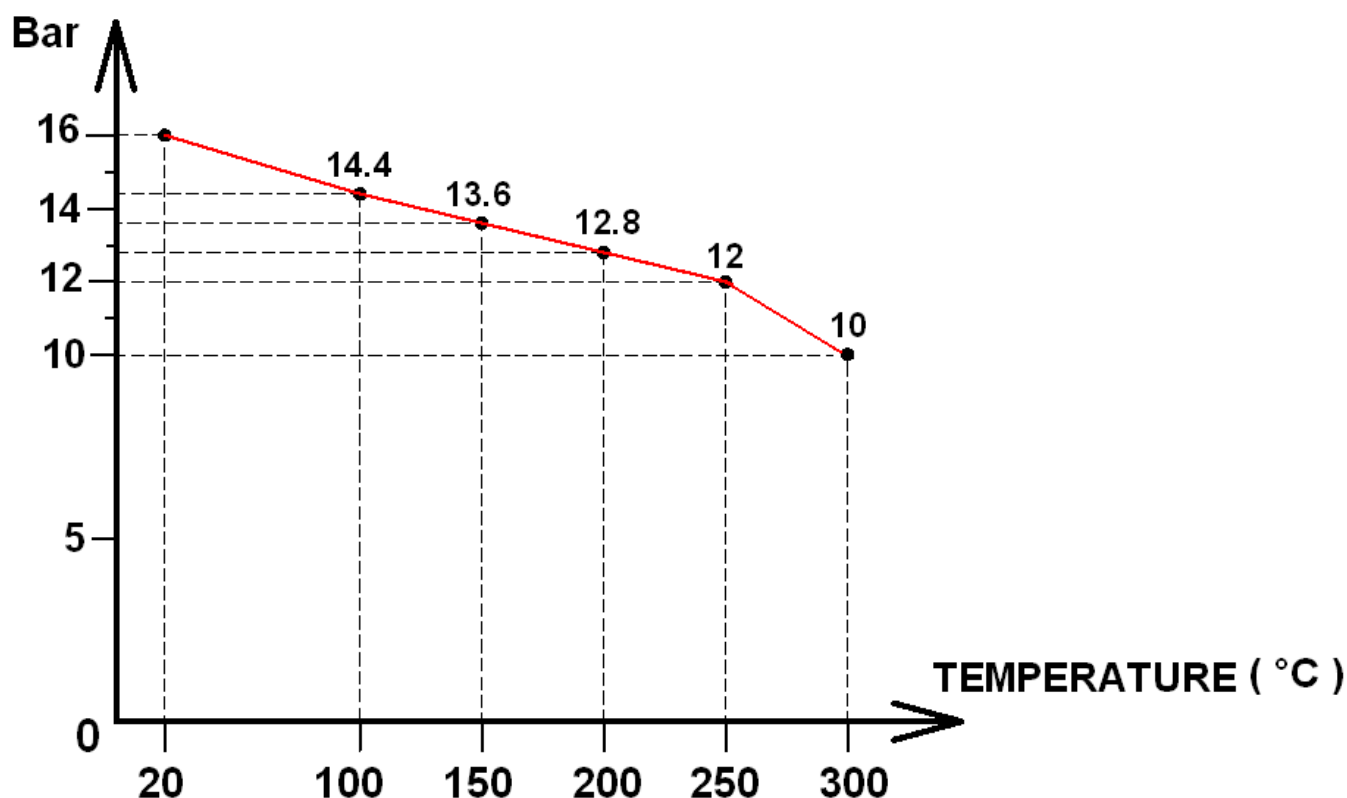
SPECIFICATIONS :

- Axial movement
- Respect the flow direction indicated by the arrow
- Stainless steel bellow
- With internal liner
- Carbon steel swiveling flanges PN16 R.F.

USE :

- For common fluids of 2nd group
- Min Temperature Ts : - 20°C
- Max Temperature Ts :+ 300°C
- Max Pressure Ps : 16 bars (see graph)
- Axial movement only

PRESSURE / TEMPERATURE GRAPH (STEAM EXCLUDED) :



MOVEMENTS (in mm) :

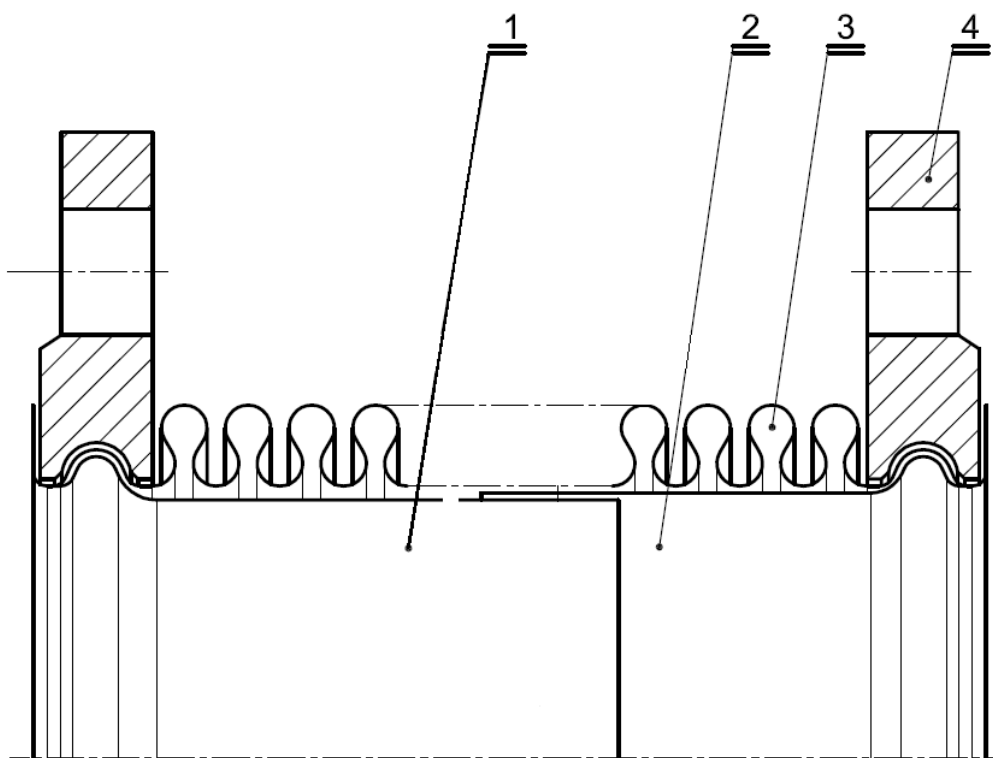
DN	25	32	40	50	65	80	100	125	150	200	250
Axial movement	± 11	± 10	± 13	± 20	± 20	± 25	± 32	± 33	± 40	± 33	± 40

CARBON STEEL METAL EXPANSION JOINT WITH STAINLESS STEEL BELLOW FLANGED PN16

RANGE :

- Expansion joint carbon steel flanges R.F.PN16 from DN25 to DN250

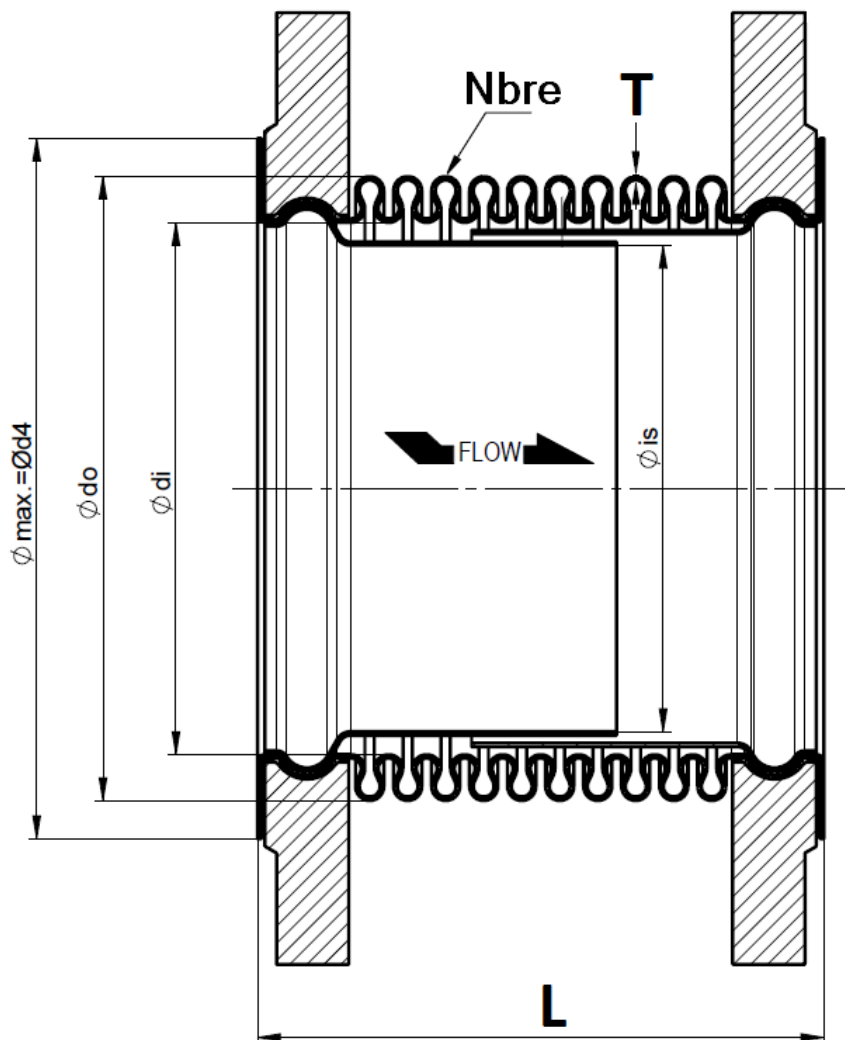
MATERIALS :



Item	Designation	Materials
1	Internal liner	AISI 321
2	Internal liner	
3	Bellow	
4	Flanges	Steel St 37.2

CARBON STEEL METAL EXPANSION JOINT WITH STAINLESS STEEL BELLOW FLANGED PN16

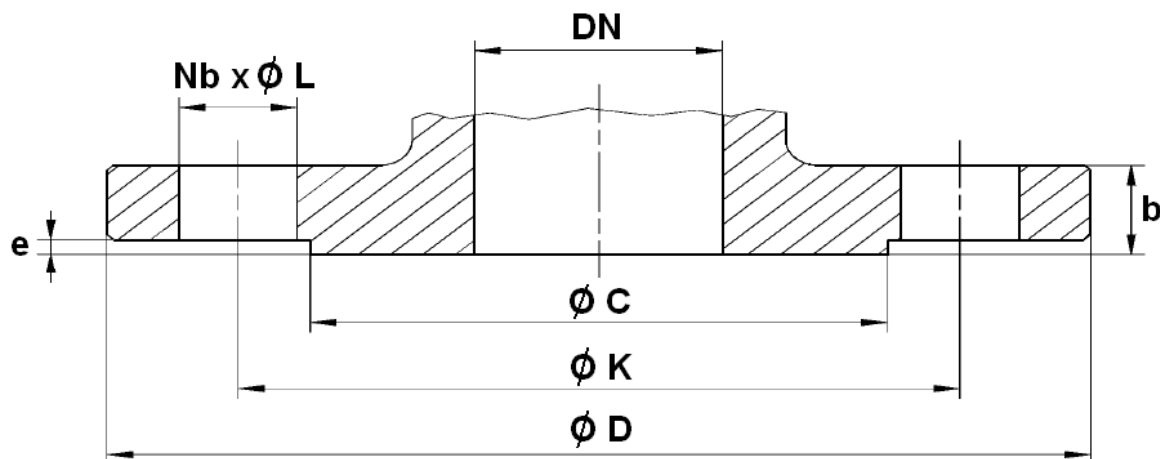
SIZE (in mm) :



DN	25	32	40	50	65	80	100	125	150	200	250
L	105	105	120	150	140	155	220	190	270	275	285
Ø do	48.2	55.6	61	77	96	112	141	165	201	252	314
Ø di	38	42.4	48.3	60.3	76.1	88.9	114.3	139.7	168.3	219.1	273
Ø d4 (max)	68	78	88	102	122	138	158	188	212	268	320
Ø is	32	36	41.4	53.5	70	78	103.5	127.3	156	207	256
T	0.3	0.3	0.3	0.4	0.4	0.5	0.6	0.6	0.6	0.8	1
Waves Nbre	17	17	17	20	16	15	20	16	20	16	14
Weight (in Kg)	2.05	3.09	3.38	4.62	5.65	7.02	8.77	11.24	15.11	21.07	31
Ref.	1521025	1521032	1521040	1521050	1521065	1521080	1521100	1521125	1521150	1521200	1521250

CARBON STEEL METAL EXPANSION JOINT WITH STAINLESS STEEL BELLOW FLANGED PN16

FLANGES SIZE (in mm) :



DN	25	32	40	50	65	80	100	125	150	200	250
Ø C	68	78	88	102	122	138	158	188	212	268	320
Ø D	115	140	150	165	185	200	220	250	285	340	405
Ø K	85	100	110	125	145	160	180	210	240	295	355
Nb x Ø L	4 x 14	4 x 18	4 x 18	4 x 18	4 x 18	8 x 18	8 x 18	8 x 18	8 x 23	12 x 23	12 x 27
b	16	16	16	18	18	20	20	22	22	24	26
e	2	2	3	3	3	3	3	3	3	3	4

STANDARDS :

- Manufacturer certified ISO 9001 : 2015
- DIRECTIVE 2014/68/EU : CE N° 0408
Risk category II Module A2- C2
- Flanges R.F. according to EN 1092-1 PN16
- Designing according to EN 14917

ADVICE : Our opinion and our advice are not guaranteed and SFERACO shall not be liable for the consequences of damages.
The customer must check the right choice of the products with the real service conditions.